



PRELIMS

INFO



SCPA Championship Prelims

Participant Information

Welcome to SCPA Championship Prelims, Semifinals, and PSJ Finals!

Event Location

[Coussoulis Arena at Cal State San Bernardino](#)

5500 University Pkwy,
San Bernardino, CA 92407

Tickets and Seating

Tickets for each day of Prelims / Semifinals are \$25 (plus fees) and are all general admission. Tickets will be [sold exclusively online](#) or via a QR code on-site. No tickets will be sold in person. Once ticket sales meet the capacity limit, sales will close, and no additional tickets will be made available.

Seating is not guaranteed and is available on a first-come, first-served basis. Front-side seating is not guaranteed once those sections hit capacity. It is the spectator's responsibility to ensure they are seated at least 15 minutes before a scheduled performance. Spectator doors will open 30 minutes before the start of the event. Children five and under are free.

Video and Photos

Tripods and/or monopods are prohibited in the stands. No recording or live streaming is permitted. Still photography (without a flash) is welcome for personal, non-commercial use.

Security Screening

Coussoulis Arena conducts security screenings and bag checks. Please allow extra time for entry.

Spectator / Staff Parking

All spectators and staff vehicles will park in the East Parking Structure, PK2 (see campus diagram). Weekend [parking permits](#) are \$3 per day.

Truck & Bus Parking

Ensemble parking is guaranteed for buses, trucks, semis, and carpool vehicles carrying six (6) or more performers. All other vehicles must park in the East

Parking Structure (\$3) on a first-come, first-served basis. Drop-offs cannot be accommodated in the truck/bus parking lot. No RVs are allowed at SCPA events.

Trucks and buses must arrive and unload in parking lot H at their designated time (see schedules and diagrams) and remain there during your ensemble's warm-up and performance time. If vehicles find themselves in the area early, they may wait in lot N for their designated arrival time.

Immediately after your performance and group photo, trucks will need to be reloaded, and then all vehicles will need to relocate to parking lot N for the remainder of the day. Vehicles must vacate parking lot H within 60 minutes after your performance concludes to make room for other ensembles. Lot H is a silent zone.

If you plan to feed your ensemble during the event, please do so in Lot N, in an open space on campus, or off-site. Lot H is for loading and unloading only.

There will be no overnight parking at this event. Please make alternate arrangements.

Restrooms

Restrooms are available in the arena for those with a wristband. Portable restrooms are also available in the truck/bus parking lot (H).

Ensemble Warm-Up

All warm-up will take place according to the logistics schedule and in designated areas (see schedules and diagrams). Warm-up in other areas or at other times is prohibited. Floor tarps (both "practice" and "performance") are not to be pulled out during Championships warm-up. See diagrams for warm-up orientation. Face your ensemble in the direction

indicated by the arrow. All equipment must be removed from the warm-up area before you depart for your performance.

Arena Transit

Ensembles departing the warm-up area to push to the arena will use the cement walkway for entrance transit (see diagrams).

Ensembles exiting the floor folding area will use the paved access road to push back to the truck/bus parking lots (see diagrams).

Non-Performing Helpers

Up to a maximum of twenty (20) non-performing helpers (staff, parents, etc.) may assist an ensemble with entry, setup, and exit. This will be strictly enforced at ensemble entry.

Non-performing helpers will need to be wearing their floor-access credentials (available in your check-in packet) and will also need a wristband or director badge for the event.

Pre-Stage

As your ensemble approaches the arena doors, you can pre-stage some of your equipment and/or instruments inside the arena, with the rest remaining in the tunnel until your scheduled performance time. Once the group on the floor begins their performance, the arena doors will close and remain so for the duration of the performance.

We recommend arriving with a clear plan concerning what and/or who your ensemble chooses to stage in the arena and in the tunnel. Those in the arena need to ensure they are not a distraction.

Designated Viewing Locations

Please see diagrams for the designated sound engineer and non-performing helper viewing locations. There will be exactly three (3) seats “up top” for a sound engineer and two key staff members and eighteen (18) additional seats “down low” for the remainder of your group’s non-performing helpers. All assisting personnel are required to sit in the designated areas.

Staff members are asked not to rush up and down the stairs as this is a distraction to the audience and

adjudicators. There is to be no sitting on the stairs or aisles.

Ensemble Photo

After your performance, proceed to the floor folding area, where you’ll have one interval time to fold your floor. Please be mindful of time, as another ensemble will be out shortly. Then, proceed to the ensemble photo area a short way down the access road and place your equipment out of the way of other ensembles. Once you’ve taken your photo, return your equipment to the bus/truck lot and load your truck.

Awards Retreat

Retreat for all Prelims and Semifinals rounds will be captains only. Retreat for PSJ Finals will be a full retreat for all performing members. All those participating in retreat need to report to the floor folding area immediately following the last performance. *The last three performing PSJ ensembles will leave their equipment near the floor folding area and return it to their truck after awards.*

Advancing to Semifinals & Finals

The top three ensembles in each PSA Prelims round will advance to Semifinals. The final 12 positions in Semifinals will be filled by wild card ensembles. Rounds 1 and 3 will be adjudicated by the same panel of judges; as such, these scores will be comparable. The next six highest-scoring ensembles from Rounds 1 and 3 combined will advance to Semifinals. The same process will be used with Rounds 2 and 4 to select the final six wildcard semifinalists in PSA.

The top three ensembles in each PSA Semifinals round will advance to Finals. The final six positions in Finals will be filled by the next six highest-scoring wildcard ensembles from either round of Semifinals.

The top three ensembles in each PSO round will advance to Finals. The final six positions in Finals will be filled by the next six highest-scoring wildcard ensembles from either round.

The top-scoring ensembles in PIA, PSCA, PIO, PSCO, PSCW, PSW, and PIW will advance to Finals.

Regardless of rank, a minimum gross score of “75.00” must be achieved to advance to Finals.



Adjudication Panels

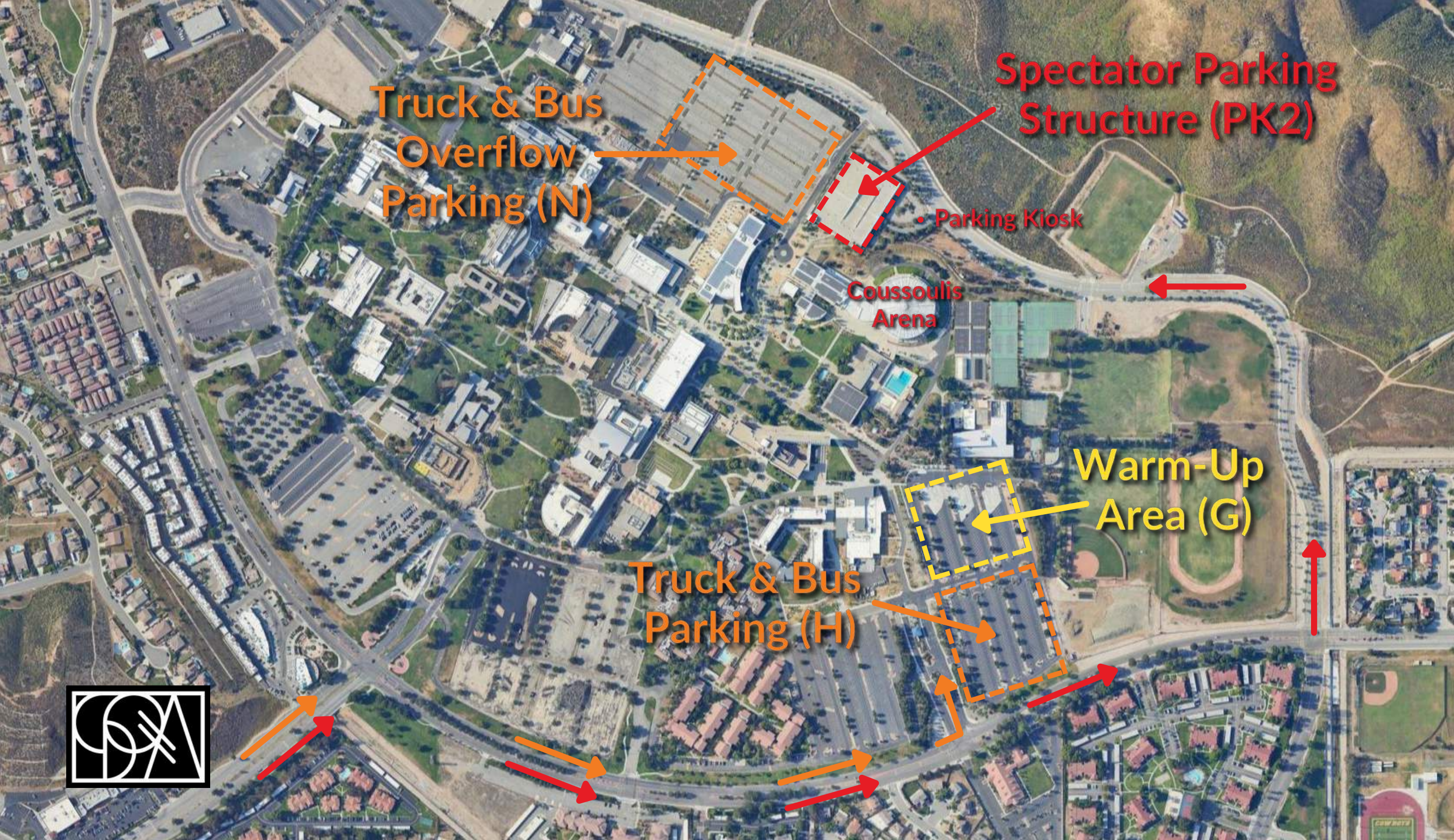
Coussoulis Arena

2024 SCPA Championship Prelims for PSCA & PSA

Panel 1
Effect-Music: Jay Kennedy
Effect-Visual: Jim Shade
Music: Julie Davila
Visual: Charles Craig
Timing & Penalties: Alex Gray
Announcer: Larney Staton

Panel 2
Effect-Music: Michael McIntosh
Effect-Visual: Matt Stevens
Music: JJ Pipitone
Visual: Fernando Miller
Timing & Penalties: Connor Kobayashi
Announcer: Christopher Rutt

Saturday, March 30, 2024
PSCA Prelims Panel 1
PSA Prelims - Round 1 Panel 2
PSA Prelims - Round 2 Panel 1
PSA Prelims - Round 3 Panel 2
PSA Prelims - Round 4 Panel 1



Truck & Bus
Overflow
Parking (N)

Spectator Parking
Structure (PK2)

• Parking Kiosk

Coussoulis
Arena

Warm-Up
Area (G)

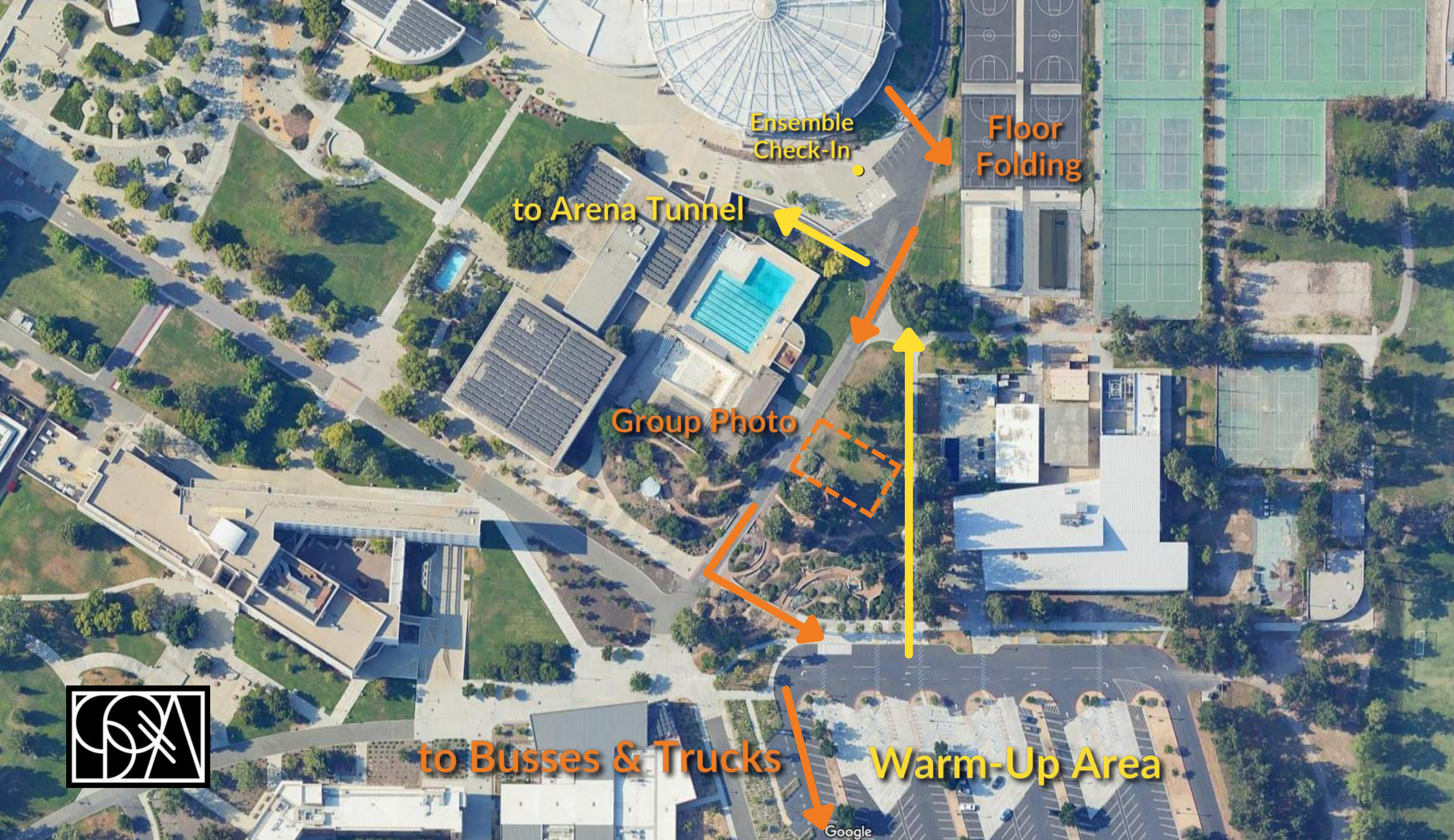
Truck & Bus
Parking (H)



Entry Walkway to Arena



*Red arrow denotes front ensemble / speaker orientation



Ensemble
Check-In

Floor
Folding

to Arena Tunnel

Group Photo

to Busses & Trucks

Warm-Up Area



Google



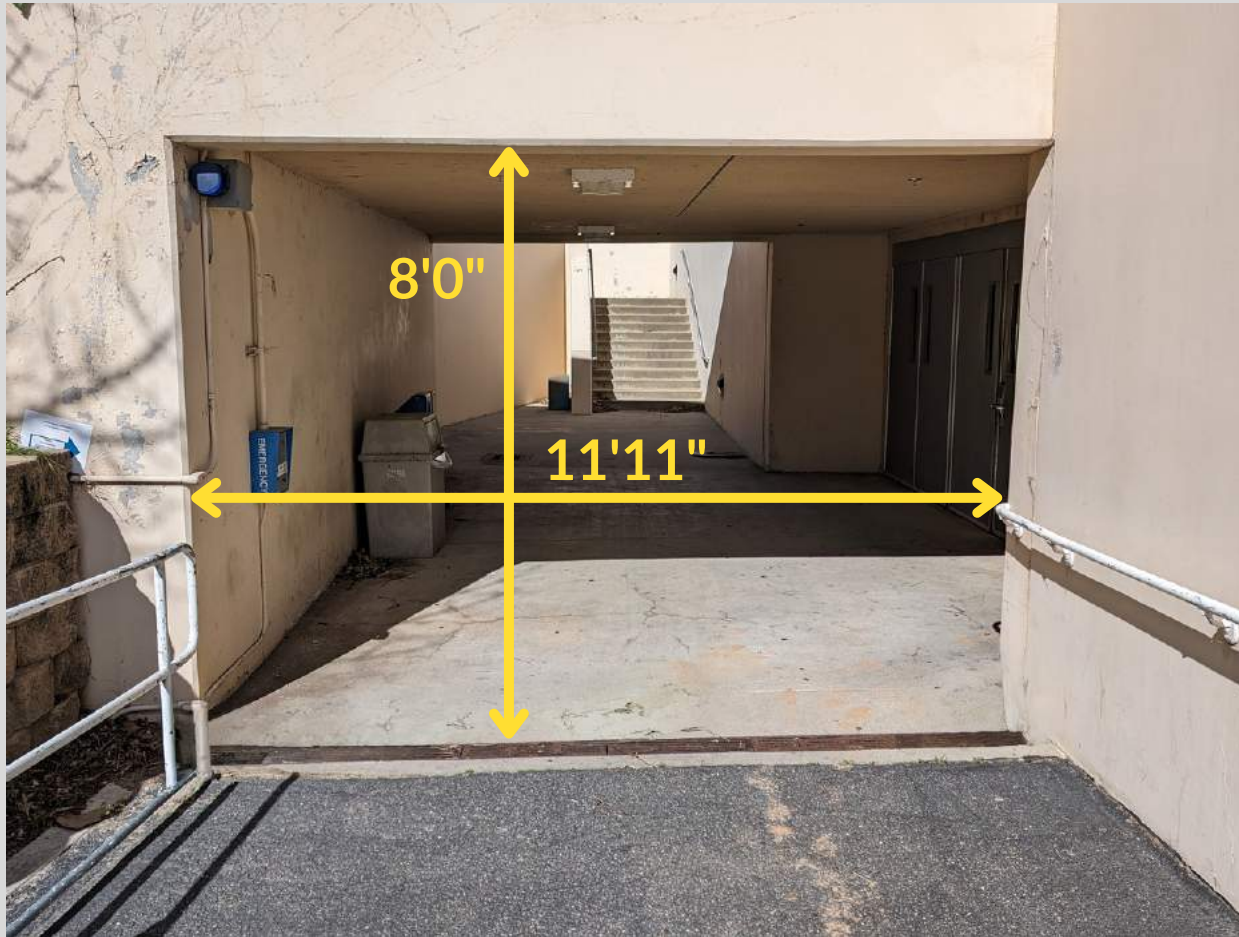
Ensemble Entry Walkway to Arena



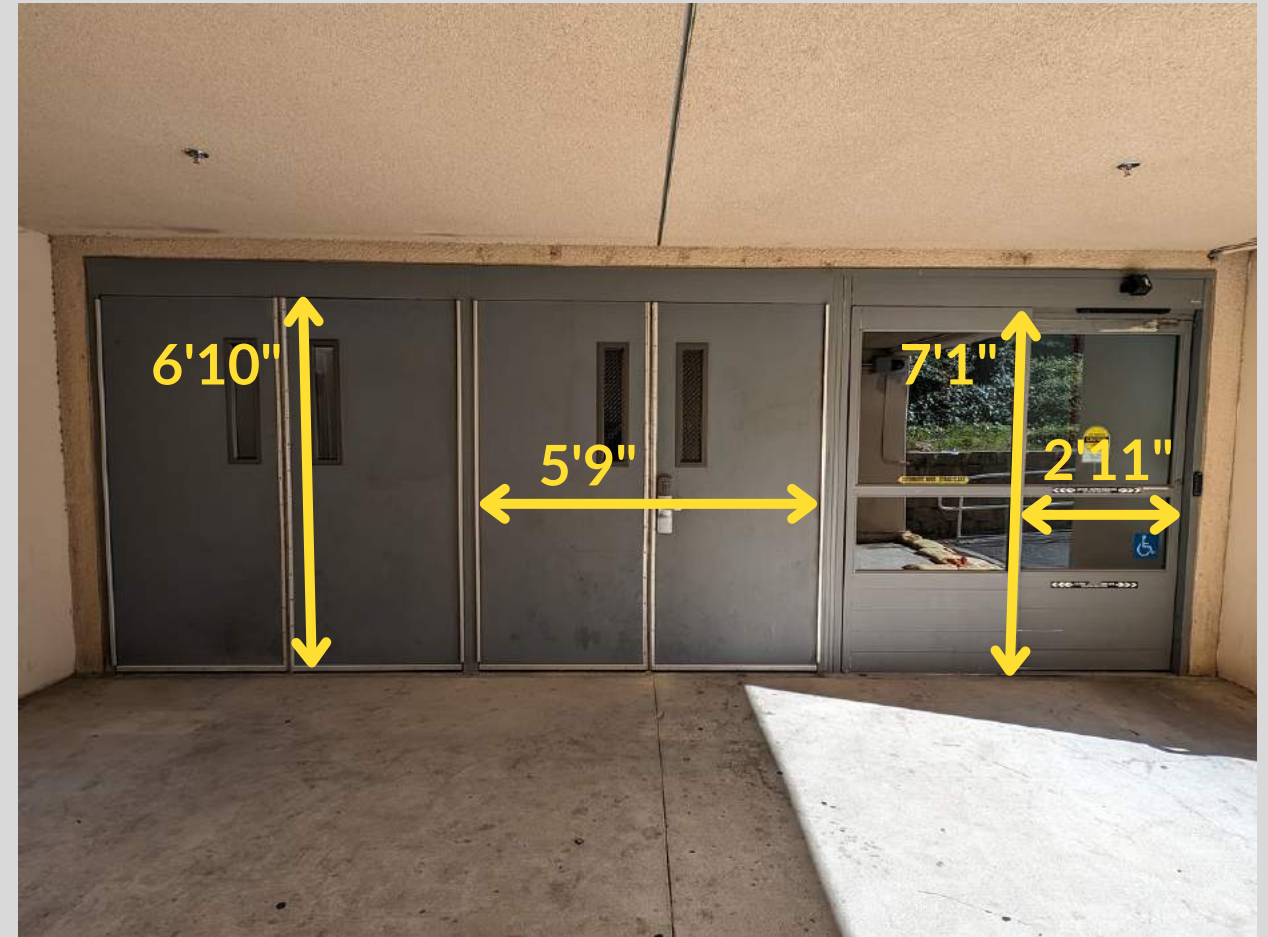
Ramp to Performance Entry



Coussoulis Arena



Ramp Overpass



Tunnel Entry Doors
(2 double doors; 1 sliding door)



Coussoulis Arena



Tunnel



Entry Doors
(1 single door; 2 double doors)



Coussoulis Arena



Exit Doors
(3 double doors)

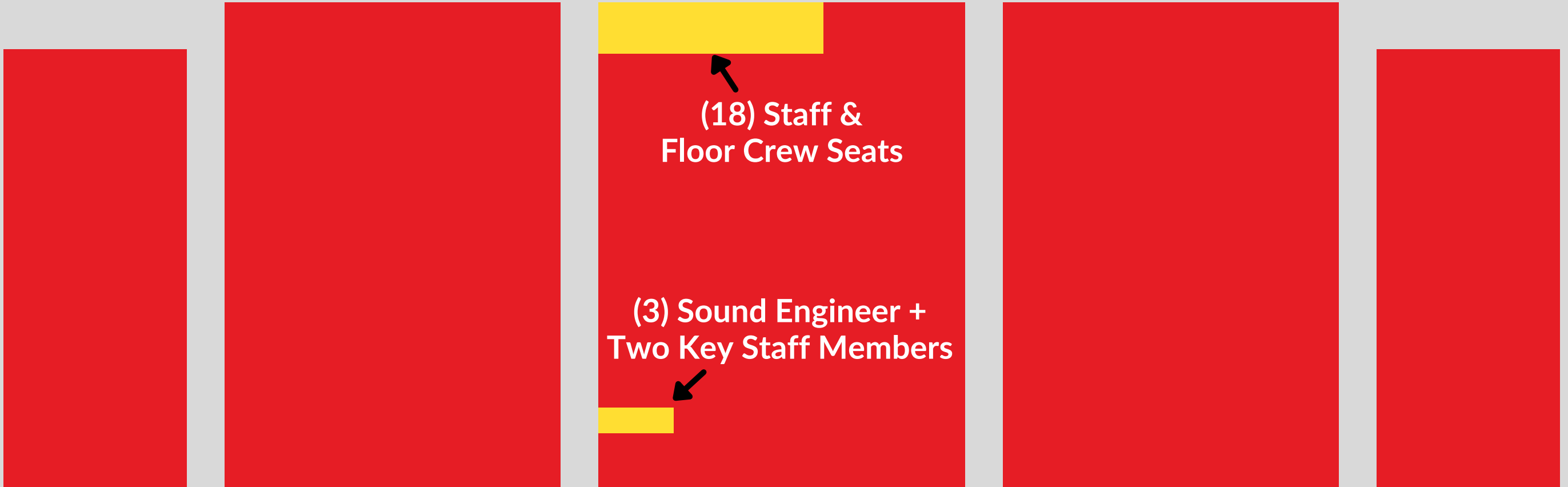


Exit Doors to Floor Folding
(3 double doors)



Coussoulis Arena

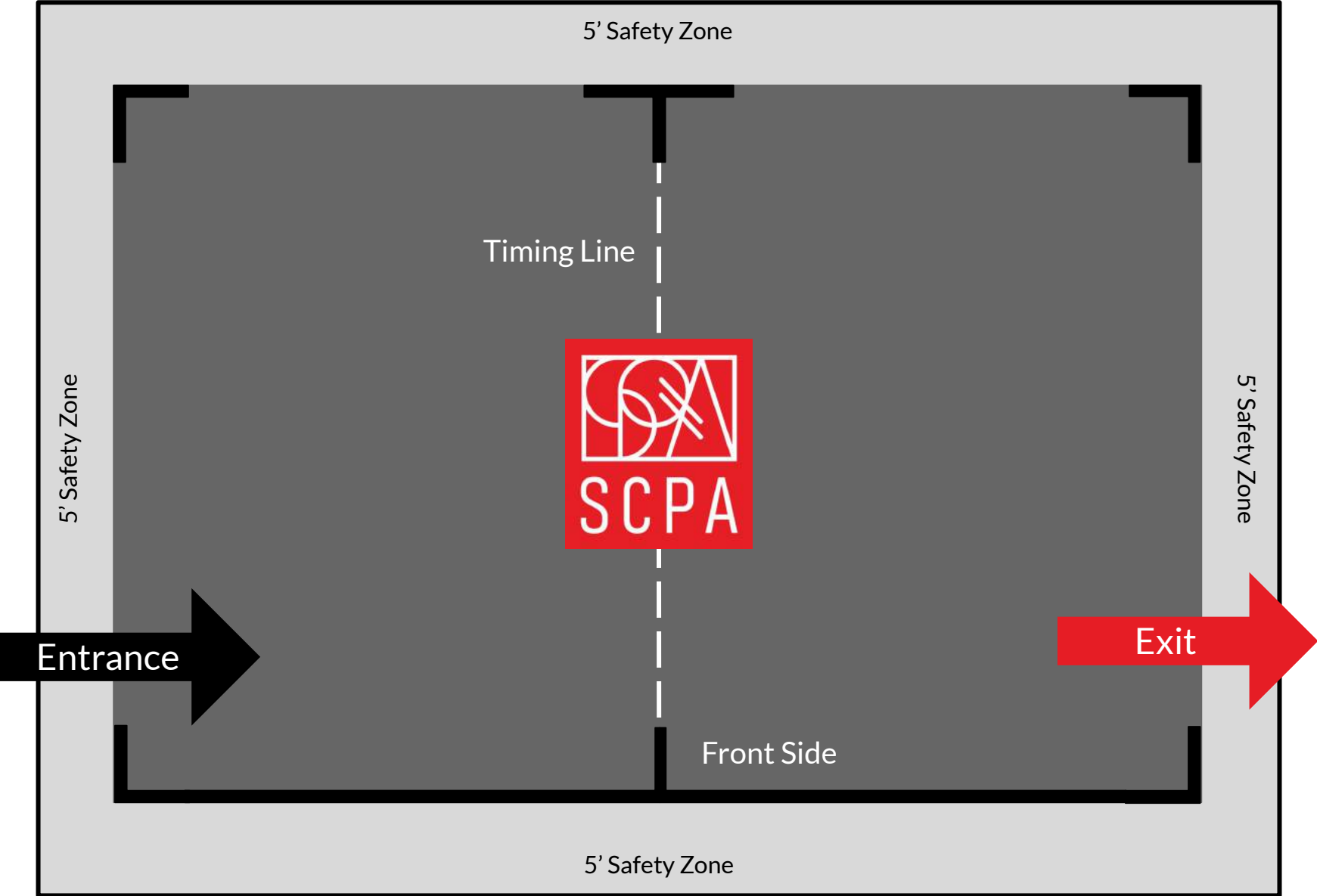
Competition Area



Coussoulis Arena

Southern California Percussion Alliance

Coussoulis Arena





FINALS

INFO



SCPA Championship Finals

Participant Information

Welcome to SCPA Championship A Class & Open Class Finals!

Event Location

[Coussoulis Arena at Cal State San Bernardino](#)

5500 University Pkwy,
San Bernardino, CA 92407

Tickets and Seating

Tickets for A & Open Class Finals are \$25 (plus fees) and are all general admission. Tickets will be [sold exclusively online](#) or via a QR code on-site. No tickets will be sold in person. Finals events are anticipated to sell out; once ticket sales meet the capacity limit, sales will close, and no additional tickets will be made available.

Seating is not guaranteed and is available on a first-come, first-served basis. Front-side seating is not guaranteed once those sections hit capacity. It is the spectator's responsibility to ensure they are seated at least 15 minutes before a scheduled performance. Spectator doors will open 30 minutes before the start of the event. Children five and under are free.

Video and Photos

Tripods and/or monopods are prohibited in the stands. No recording or live streaming is permitted. Still photography (without a flash) is welcome for personal, non-commercial use.

Security Screening

Coussoulis Arena conducts security screenings and bag checks. Please allow extra time for entry.

Spectator / Staff Parking

All spectators and staff vehicles will park in the East Parking Structure, PK2 (see campus diagram). Weekend [parking permits](#) are \$3 per day.

Truck & Bus Parking

Ensemble parking is guaranteed for buses, trucks, semis, and carpool vehicles carrying six (6) or more performers. All other vehicles must park in the East Parking Structure (\$3) on a first-come, first-served basis. Drop-offs cannot be accommodated in the truck/bus parking lot. No RVs are allowed at SCPA events.

Trucks and buses must arrive and unload in parking lot H at their designated time (see schedules and diagrams) and remain there during your ensemble's warm-up and performance time. If vehicles find themselves in the area early, they may wait in lot N for their designated arrival time.

Immediately after your performance, trucks will need to be reloaded, and then all vehicles will need to relocate to parking lot N for the remainder of the day. Vehicles must vacate parking lot H within 60 minutes after your performance concludes to make room for other ensembles. Lot H is a silent zone.

If you plan to feed your ensemble during the event, please do so in Lot N, in an open space on campus, or off-site. Lot H is for loading and unloading only.

Restrooms

Restrooms are available in the arena for those with a wristband. Portable restrooms are also available in the truck/bus parking lot (H).

Ensemble Warm-Up

All warm-up will take place according to the logistics schedule and in designated areas (see schedules and diagrams). Warm-up in other areas or at other times is prohibited. Floor tarps (both "practice" and "performance") are not to be pulled out during Championships warm-up. See diagrams for warm-up orientation. Face your ensemble in the direction

indicated by the arrow. All equipment must be removed from the warm-up area before you depart for your performance.

Arena Transit

Ensembles departing the warm-up area to push to the arena will use the cement walkway for entrance transit (see diagrams).

Ensembles exiting the floor folding area will use the paved access road to push back to the truck/bus parking lots (see diagrams).

Non-Performing Helpers

Up to a maximum of twenty (20) non-performing helpers (staff, parents, etc.) may assist an ensemble with entry, setup, and exit. This will be strictly enforced at ensemble entry.

Non-performing helpers will need to be wearing their floor-access credentials (available in your check-in packet) and will also need a wristband or director badge for the event.

Pre-Stage

As your ensemble approaches the arena doors, you can pre-stage some of your equipment and/or instruments inside the arena, with the rest remaining in the tunnel until your scheduled performance time. Once the group on the floor begins their performance, the arena doors will close and remain so for the duration of the performance.

We recommend arriving with a clear plan concerning what and/or who your ensemble chooses to stage in

the arena and in the tunnel. Those in the arena need to ensure they are not a distraction.

Designated Viewing Locations

Please see diagrams for the designated sound engineer and non-performing helper viewing locations. There will be exactly three (3) seats “up top” for a sound engineer and two key staff members and eighteen (18) additional seats “down low” for the remainder of your group’s non-performing helpers. All assisting personnel are required to sit in the designated areas.

Staff members are asked not to rush up and down the stairs as this is a distraction to the audience and adjudicators. There is to be no sitting on the stairs or aisles.

Awards Retreat

Retreat for Finals is a full retreat for all performing members. All those participating in retreat need to report to the floor folding area immediately following the last performance.

The last three performing PIO ensembles will leave their equipment near the floor folding area and return it to their truck after awards.

Following the final score announcement, ensembles will be excused to leave the floor one at a time in reverse order of entry. Ensembles are encouraged to celebrate their accomplishments, distribute any medals earned, and take photos outside in the floor folding area following the conclusion of the event.

Instructors and parents seated in the spectator area will not have access to the arena floor and will need to exit out of the main doors at the conclusion of the event.

SCPA encourages performers to wear any medals previously earned at SCPA or WGI events for Finals retreat.



Adjudication Panels

Coussoulis Arena

2024 SCPA Championship Finals

Class	Effect-Music / Artistry	Effect-Visual	Music	Visual	T&P	Announcer
PSA	Ulibarri	Fairbanks	Rarick	Metz	Kobayashi	Rutt
	Sanders	Kuhn	Leitzke	Mascaro		
PIA	Sanders	Kuhn	Leitzke	Mascaro	Kobayashi	Rutt
	Jordan	Waymire	Rapacki	Hardin		
PSCA	Jordan		Rapacki		Gray	Staton
	Ulibarri		Rarick			
PSCO	Ulibarri		Rarick		Kobayashi	Rutt
	Sanders		Leitzke			
PSO	Sanders	Kuhn	Leitzke	Mascaro	Gray	Staton
	Jordan	Waymire	Rapacki	Hardin		
PIO	Jordan	Waymire	Rapacki	Hardin	Gray	Staton
	Ulibarri	Fairbanks	Rarick	Metz		

PSW	Ulibarri	Fairbanks	Rarick	Metz	Kobayashi	Rutt
	Jordan	Waymire	Rapacki	Hardin		
PSCW	Jordan		Rapacki		Gray	Staton
	Sanders		Leitzke			
PIW	Sanders	Kuhn	Leitzke	Mascaro	Gray	Staton
	Ulibarri	Fairbanks	Rarick	Metz		



SCPA Championship Finals

Participant Information

Welcome to SCPA Championship World Class Finals!

Event Location

[Coussoulis Arena at Cal State San Bernardino](#)

5500 University Pkwy,
San Bernardino, CA 92407

Tickets and Seating

Seats for World Class Finals are all individually ticketed and are \$50, \$40, and \$30 (plus fees) depending on the section selected. Tickets will be [sold exclusively online](#) or via a QR code on-site. No tickets will be sold in person. Children 2 and under are free if sitting on a parent's lap. Any child needing their own seat will need a ticket.

Finals events are anticipated to sell out; once ticket sales meet the capacity limit, sales will close, and no additional tickets will be made available.

It is the spectator's responsibility to ensure they are seated at least 15 minutes before a scheduled performance. Spectator doors will open 30 minutes before the start of the event.

Video and Photos

Tripods and/or monopods are prohibited in the stands. No recording or live streaming is permitted. Still photography (without a flash) is welcome for personal, non-commercial use.

Security Screening

Coussoulis Arena conducts security screenings and bag checks. Please allow extra time for entry.

Spectator / Staff Parking

All spectators and staff vehicles will park in the East Parking Structure, PK2 (see campus diagram). Weekend [parking permits](#) are \$3 per day.

Truck & Bus Parking

Ensemble parking is guaranteed for buses, trucks, semis, and carpool vehicles carrying six (6) or more performers. All other vehicles must park in the East Parking Structure (\$3) on a first-come, first-served basis. Drop-offs cannot be accommodated in the truck/bus parking lot. No RVs are allowed at SCPA events.

Trucks and buses must arrive and unload in parking lot H at their designated time (see schedules and diagrams) and remain there during your ensemble's warm-up and performance time. If vehicles find themselves in the area early, they may wait in lot N for their designated arrival time.

Immediately after your performance, trucks will need to be reloaded, and then all vehicles will need to relocate to parking lot N for the remainder of the day. Vehicles must vacate parking lot H within 60 minutes after your performance concludes to make room for other ensembles. Lot H is a silent zone.

If you plan to feed your ensemble during the event please do so in Lot N, in an open space on campus, or off-site. Lot H is for loading and unloading only.

Restrooms

Restrooms are available in the arena for those with a wristband. Portable restrooms are also available in the truck/bus parking lot (H).

Ensemble Warm-Up

All warm-up will take place according to the logistics schedule and in designated areas (see schedules and diagrams). Warm-up in other areas or at other times is prohibited. Floor tarps (both "practice" and "performance") are not to be pulled out during Championships warm-up. See diagrams for warm-up orientation. Face your ensemble in the direction

indicated by the arrow. All equipment must be removed from the warm-up area before you depart for your performance.

Arena Transit

Ensembles departing the warm-up area to push to the arena will use the cement walkway for entrance transit (see diagrams).

Ensembles exiting the floor folding area will use the paved access road to push back to the truck/bus parking lots (see diagrams).

Non-Performing Helpers

Up to a maximum of twenty (20) non-performing helpers (staff, parents, etc.) may assist an ensemble with entry, setup, and exit. This will be strictly enforced at ensemble entry.

Non-performing helpers will need to be wearing their floor-access credentials (available in your check-in packet) and will also need a wristband or director badge for the event.

Pre-Stage

As your ensemble approaches the arena doors, you can pre-stage some of your equipment and/or instruments inside the arena, with the rest remaining in the tunnel until your scheduled performance time. Once the group on the floor begins their performance, the arena doors will close and remain so for the duration of the performance.

We recommend arriving with a clear plan concerning what and/or who your ensemble chooses to stage in

the arena and in the tunnel. Those in the arena need to ensure they are not a distraction.

Designated Viewing Locations

Please see diagrams for the designated sound engineer and non-performing helper viewing locations. There will be exactly three (3) seats “up top” for a sound engineer and two key staff members and eighteen (18) additional seats “down low” for the remainder of your group’s non-performing helpers. All assisting personnel are required to sit in the designated areas.

Staff members are asked not to rush up and down the stairs as this is a distraction to the audience and adjudicators. There is to be no sitting on the stairs or aisles.

Awards Retreat

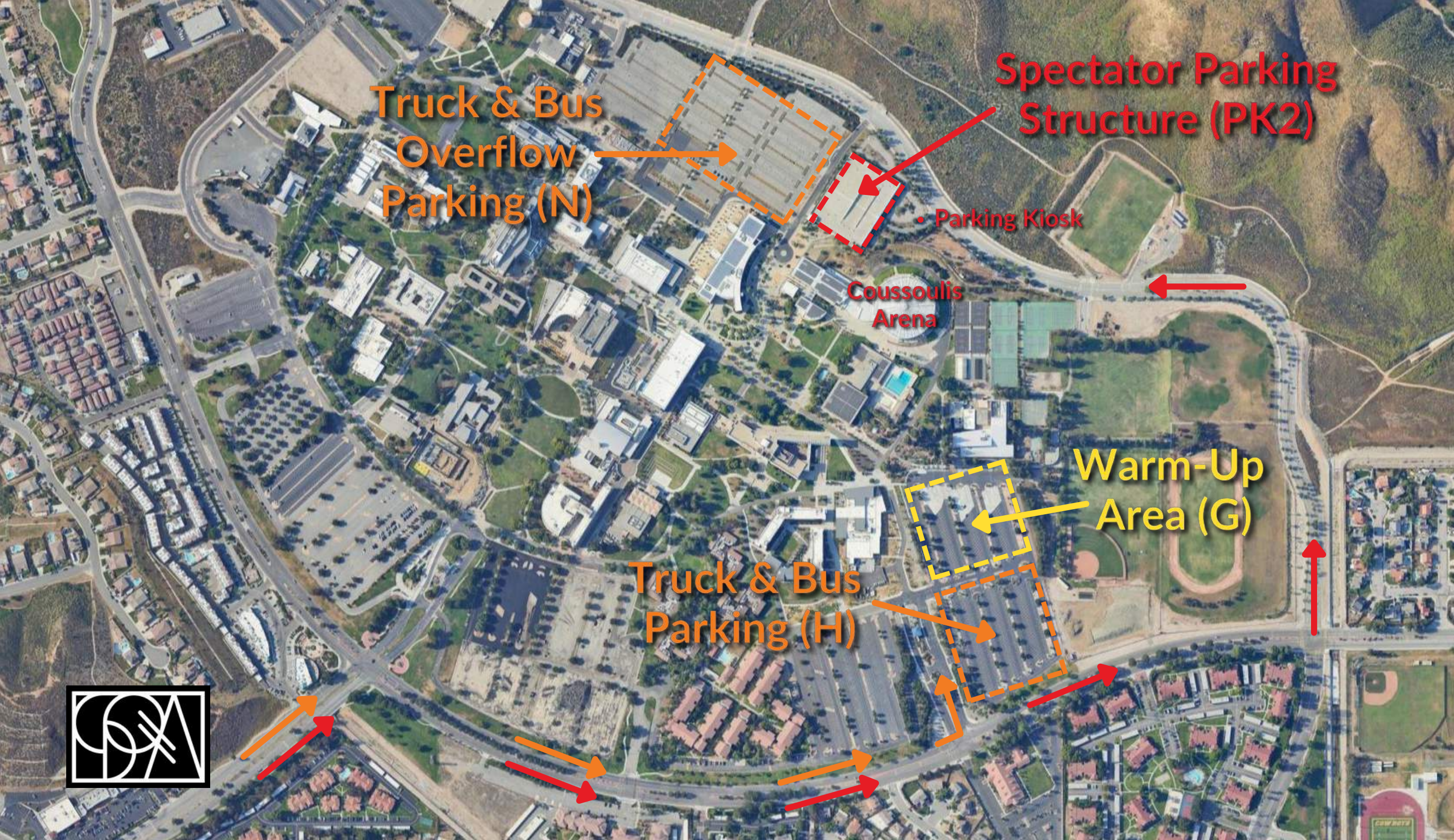
Retreat for Finals is a full retreat for all performing members. All those participating in retreat need to report to the floor folding area immediately following the last performance.

The last three performing PIW ensembles will leave their equipment near the floor folding area and return it to their truck after awards.

Following the final score announcement, ensembles will be excused to leave the floor one at a time in reverse order of entry. Ensembles are encouraged to celebrate their accomplishments, distribute any medals earned, and take photos outside in the floor folding area following the conclusion of the event.

Instructors and parents seated in the spectator area will not have access to the arena floor and will need to exit out of the main doors at the conclusion of the event.

SCPA encourages performers to wear any medals previously earned at SCPA or WGI events for Finals retreat.



Truck & Bus
Overflow
Parking (N)

Spectator Parking
Structure (PK2)

• Parking Kiosk

Coussoulis
Arena

Warm-Up
Area (G)

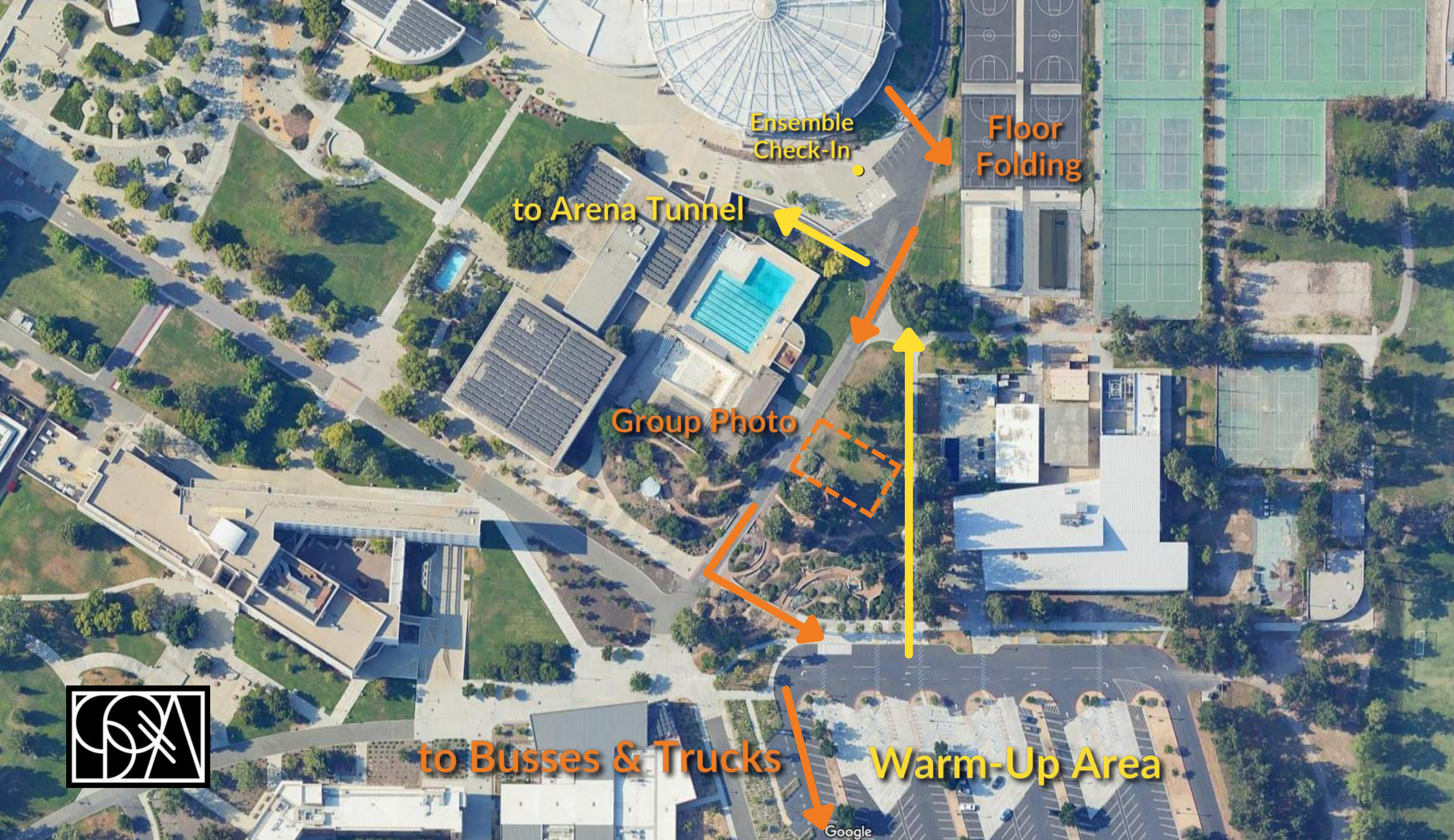
Truck & Bus
Parking (H)



Entry Walkway to Arena



*Red arrow denotes front ensemble / speaker orientation



Ensemble
Check-In

Floor
Folding

to Arena Tunnel

Group Photo

to Busses & Trucks

Warm-Up Area



Google



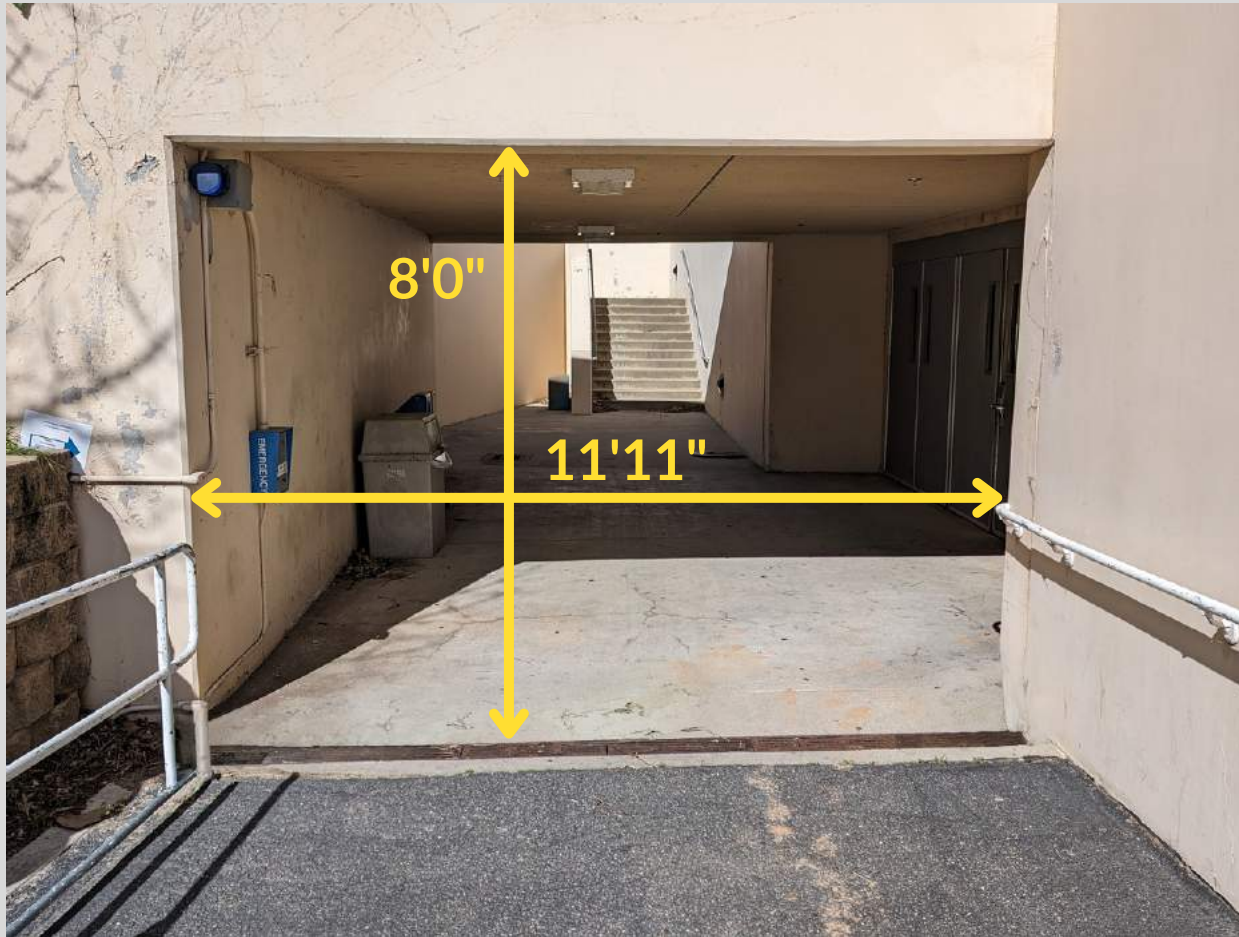
Ensemble Entry Walkway to Arena



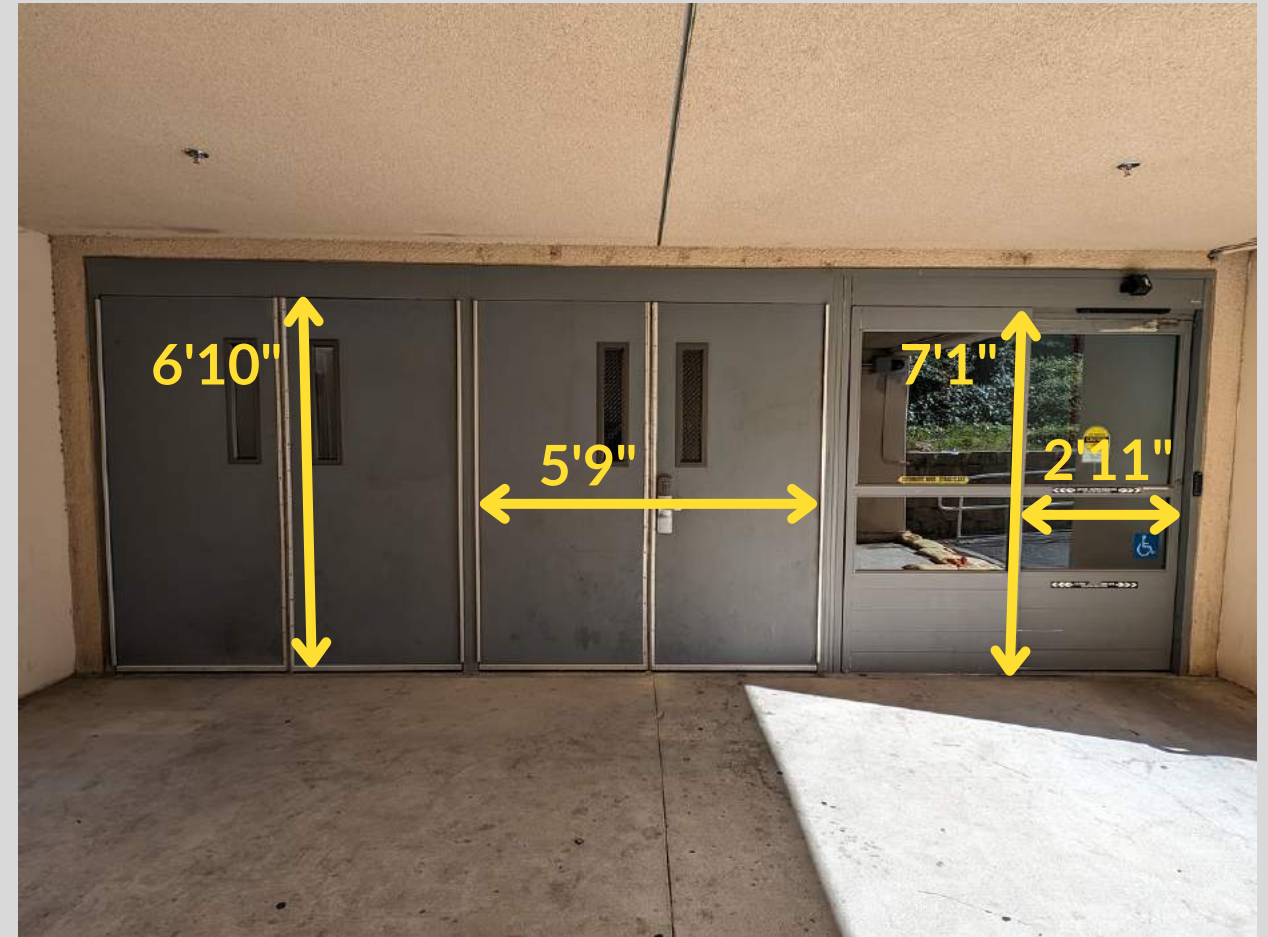
Ramp to Performance Entry



Coussoulis Arena



Ramp Overpass



Tunnel Entry Doors
(2 double doors; 1 sliding door)



Coussoulis Arena



Tunnel



Entry Doors
(1 single door; 2 double doors)



Coussoulis Arena



Exit Doors
(3 double doors)

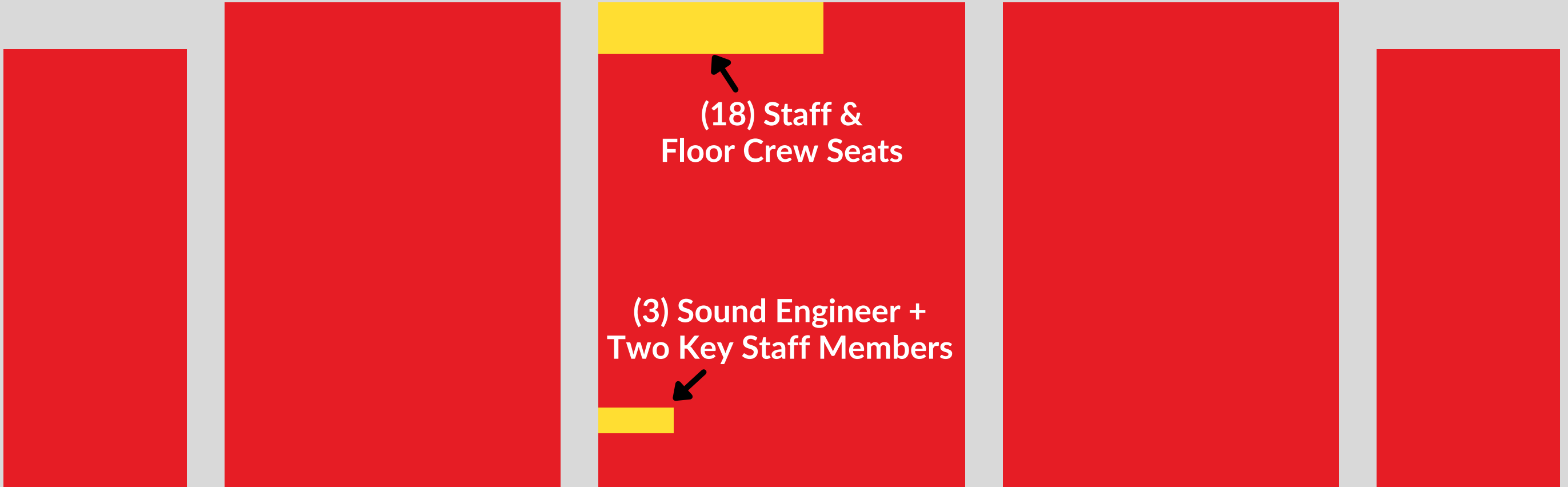


Exit Doors to Floor Folding
(3 double doors)



Coussoulis Arena

Competition Area



Coussoulis Arena

Southern California Percussion Alliance

Coussoulis Arena

