



PRELIMS

INFO

Saturday, April 6, 2024

2024 Southern California Percussion Alliance Championships, Prelims

@ James & Aerianthi Coussoulis Arena, California State University San Bernardino (CSUSB) in San Bernardino, California

Southern California Percussion Alliance (SCPA)

ITINERARY

TIME	EVENT
8:00 AM	Report (<i>Eat a hearty breakfast & Arrive with hair and make-up done</i>)
8:15 AM	Load Trucks & Make-Up Done Change into uniform after loading
9:30 AM	All Drivers Meet at THHS and Check-In
9:45 AM	Depart from Trabuco Hills High School (<i>Bring a snack</i>)
11:00 AM	Arrive at California State University San Bernardino
11:35 AM	Unload Trucks
12:05 PM	Walk to Warm-up Area C
12:15 PM	Tuning / Sectionals
12:35 PM	Full Ensemble Warm-up
1:05 PM	Lot Full Run
1:15 PM	Depart from Warm-up
1:25 PM	Staging Area
1:35 PM	Prelims Performance
1:45 PM	Fold Floor Load Truck
2:30 PM	Lunch (<i>provided by the boosters</i>)
3:30 PM	Time Block - TBD*
5:30 PM	Return to Gymnasium for PSW Prelims & PSJ Finals Dinner (<i>students on your own</i>)
9:10 PM	Prelims Awards
9:45 PM	Depart from California State University San Bernardino
10:45 PM	Approximate Arrival at Trabuco Hills High School
10:50 PM	Unload Instruments, Equipment and Clean-Up
11:15 PM	Roll-Call & Approximate Dismissal

**STUDENTS WILL NOT BE DISMISSED UNTIL THE TRUCK IS FULLY UNLOADED.
FEEL FREE TO HELP EXPEDITE THE PROCESS WHILE YOU WAIT FOR THEM.**

REMINDERS

- All SVUSD and Music Program expectations and policies apply while traveling to/from and at the show site.
- Dress Attire: Jeans, Polos Tucked In, Belt, Approved Outwear, No Hats or Beanies after the performance
- The entire Percussion Ensemble must sit together inside the Arena

***** Please keep in mind, no schedule is sacred and always subject to change!!!**



DIRECTIONS FROM TRABUCO HILLS HIGH SCHOOL



California State University, San Bernardino (CSUSB)
5500 University Parkway
San Bernardino, California 92407-2318

Via The Toll Roads

- Take SR-241 Toll Road North towards Riverside
- The Tomato Springs Toll Plaza is \$4.28 and the Windy Ridge Toll Plaza is \$4.49
- Take SR-91 Freeway East towards Riverside
- Pass the I-15 Freeway and the I-10 Freeway
- Take I-215 Freeway North
- Exit University Parkway and turn right
- Turn right on Northpark Boulevard

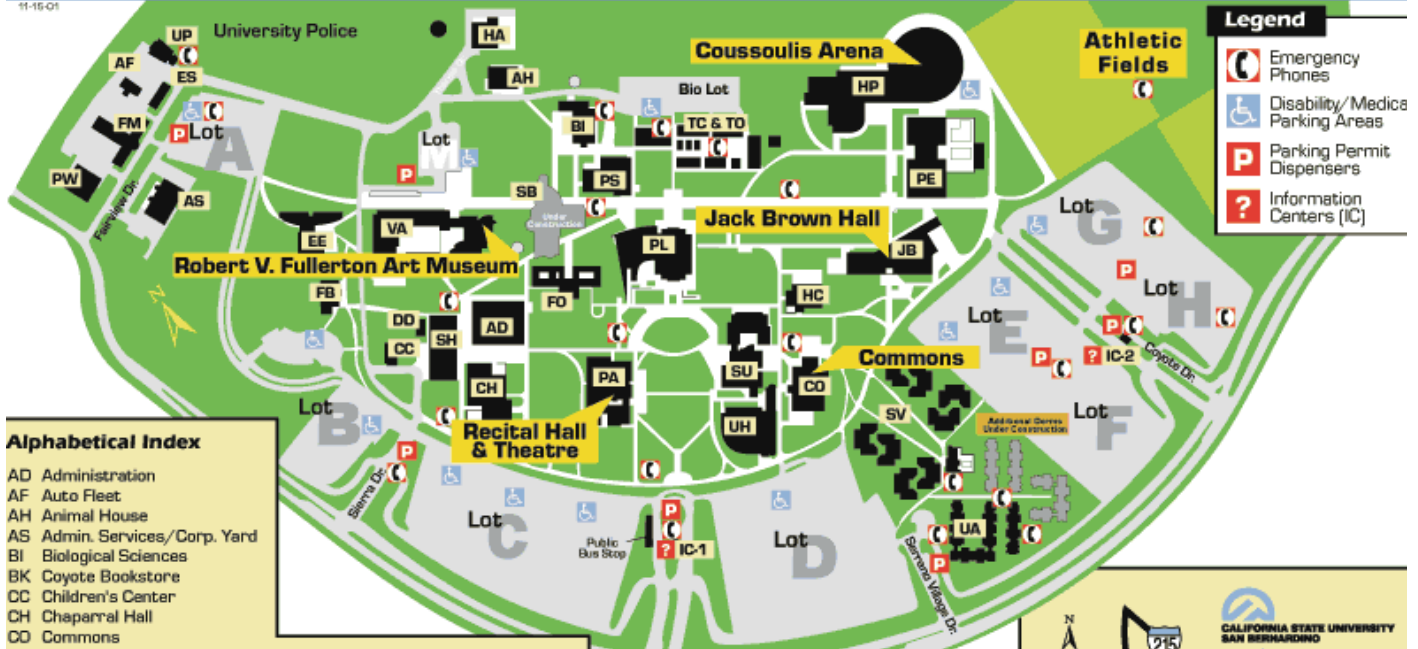
Without The Toll Roads

- Take I-5 Freeway North towards Santa Ana
- Take SR-55 Freeway North
- Take SR-91 Freeway East towards Riverside
- Pass the I-15 Freeway and the I-10 Freeway
- Take I-215 Freeway North
- Exit University Parkway and turn right
- Turn right on Northpark Boulevard

CALIFORNIA STATE UNIVERSITY, SAN BERNARDINO

Campus Map

11-16-01



Alphabetical Index

AD Administration	PE Physical Education
AF Auto Fleet	PL John M. Pfau Library
AH Animal House	PS Physical Sciences
AS Admin. Services/Corp. Yard	PW Central Warehouse
BI Biological Sciences	SB Social & Behavioral Sciences
BK Coyote Bookstore	SH Sierra Hall
CC Children's Center	SU Student Union
CH Chaparral Hall	SV Serrano Village
CD Commons	TC Temp. Classrooms
DD Univ. Center for Developmental Disabilities	TO Temp. Offices
EE Yasuda Center for Ext. Educ.	UA University Apartments
ES Environmental Safety	UH University Hall
FB Foundation Building	UP University Police
FM Facilities Management	VA Visual Arts Center/Robert V. Fullerton Art Museum
FO Faculty Office Building	
HA HVAC Central Plant	
HC Health Center	
HP Health and PE Complex/Coussoulis Arena	
IC Information Centers	
JB Jack H. Brown Hall	
PA Performing Arts/Theatre/Recital Hall	

University Parkway
 ← to 215 Freeway

Northpark Blvd.

**CALIFORNIA STATE UNIVERSITY
 SAN BERNARDINO**

5500 University Parkway
 San Bernardino, CA 92407
 (909) 880-5000 www.csusb.edu



Saturday, March 30, 2024

2024 Southern California Percussion Alliance Championships, Prelims

© James & Aerianthi Coussoulis Arena, California State University San Bernardino (CSUSB) in San Bernardino, California

Southern California Percussion Alliance (SCPA)

Prelims Performance Schedule (as of 03/19/24)

CLASS	UNIT	PERFORM
PSCA PRELIMS		
PSCA	Chaffey High School	11:00 AM
PSCA	Lakewood High School	11:09 AM
PSCA	Aliso Niguel High School	11:18 AM
PSCA	Del Norte High School	11:27 AM
PSCA	Eleanor Roosevelt High School	11:36 AM
PSCA	Esperanza High School	11:45 AM
PSCA	St. Genevieve Parish Schools	11:54 AM
BREAK		12:03 PM
PSA PRELIMS - ROUND 1		
PSA	La Quinta High School (W)	12:13 PM
PSA	Orange Vista High School	12:22 PM
PSA	Buena Park High School	12:31 PM
PSA	Don Lugo High School	12:40 PM
PSA	Westlake High School	12:49 PM
PSA	Sierra Vista High School	12:58 PM
PSA	Glen A. Wilson High School	1:07 PM
PSA	Walnut High School	1:16 PM
PSA	Thousand Oaks High School	1:25 PM
PSA	Mission Hills High School	1:34 PM
PSA	Sunny Hills High School	1:43 PM
PSA	El Segundo High School	1:52 PM
PSA	Baldwin Park High School	2:01 PM
PSA	Cypress High School	2:10 PM
BREAK		2:19 PM
PSA PRELIMS - ROUND 2		
PSA	Escondido Union High School District	2:29 PM
PSA	Valley View High School	2:38 PM
PSA	Arlington High School	2:47 PM
PSA	Temescal Canyon High School	2:56 PM
PSA	Warren High School	3:05 PM
PSA	Simi Valley High School	3:14 PM
PSA	Del Norte High School	3:23 PM
PSA	Mission Viejo High School	3:32 PM
PSA	La Habra High School	3:41 PM
PSA	Aliso Niguel High School	3:50 PM
PSA	Westminster High School	3:59 PM
PSA	Mira Costa High School	4:08 PM
PSA	Ramona High School	4:17 PM
PSA	Serrano High School	4:26 PM
BREAK		4:35 PM



Saturday, March 30, 2024

2024 Southern California Percussion Alliance Championships, Prelims

@ James & Aerianthi Coussoulis Arena, California State University San Bernardino (CSUSB) in San Bernardino, California

Southern California Percussion Alliance (SCPA)

Prelims Performance Schedule (as of 03/19/24)

CLASS	UNIT	PERFORM
PSA PRELIMS - ROUND 3		
PSA	Laguna Hills High School	4:45 PM
PSA	Oak Park High School	4:54 PM
PSA	Granada Hills Charter	5:03 PM
PSA	Torrance High School	5:12 PM
PSA	Redondo Union High School	5:21 PM
PSA	Tesoro High School	5:30 PM
PSA	Palisades Charter High School	5:39 PM
PSA	South Hills High School	5:48 PM
PSA	San Dimas High School	5:57 PM
PSA	St. Genevieve High School	6:06 PM
PSA	Arcadia High School	6:15 PM
PSA	Moorpark High School	6:24 PM
PSA	Los Alamitos High School	6:33 PM
BREAK		6:42 PM
PSA PRELIMS - ROUND 4		
PSA	San Marino High School	6:52 PM
PSA	Santa Barbara Combined Schools	7:01 PM
PSA	Helix Charter High School	7:10 PM
PSA	Bloomington High School	7:19 PM
PSA	Monrovia High School	7:28 PM
PSA	Savanna High School	7:37 PM
PSA	Bonita High School	7:46 PM
PSA	Crescenta Valley High School	7:55 PM
PSA	Rancho Alamitos High School	8:04 PM
PSA	La Mirada High School	8:13 PM
PSA	Glendora High School	8:22 PM
PSA	Temple City High School	8:31 PM
PSA	North Torrance High School	8:40 PM
AWARDS		9:04 PM

* PSA: The Top 3 in each round + next six highest from R1 & R3 + next six highest from R2 & R4 advance to semifinals

Effect - Music I	Jay Kennedy	
Effect - Visual I	Jim Shade	PSCA Prelims
Music I	Julie Davila	PSA Prelims - Round 2
Visual I	Charles Craig	PSA Prelims - Round 4
Timing & Penalties I	Alex Gray	
Announcer I	Larney Staton	

Effect - Music II	Michael McIntosh	
Effect - Visual II	Matt Stevens	
Music II	JJ Pipitone	PSA Prelims - Round 1
Visual II	Fernando Miller	PSA Prelims - Round 3
Timing & Penalties II	Connor Kobayashi	
Announcer II	Christopher Rutt	



Saturday, April 6, 2024

2024 Southern California Percussion Alliance Championships, Prelims / Finals

@ James & Aerianthi Coussoulis Arena, California State University San Bernardino (CSUSB) in San Bernardino, California

Southern California Percussion Alliance (SCPA)

Prelims / Finals Performance Schedule (as of 04/01/24)

CLASS	UNIT	PERFORM
PSCO PRELIMS		
PSCO	Chaffey High School	11:00 AM
PSCO	Bloomington High School	11:10 AM
PSCO	Notre Dame High School	11:20 AM
PSCO	Diamond Bar High School	11:30 AM
BREAK		11:40 AM
PSCW PRELIMS		
PSCW	Eleanor Roosevelt High School	11:50 AM
PSCW	Rowland High School	12:01 PM
PSCW	West Ranch High School	12:12 PM
PSCW	Ayala High School	12:23 PM
PSCW	Woodbridge High School	12:34 PM
BREAK		12:45 PM
PSO PRELIMS - ROUND 1		
PSO	Rancho Verde High School	12:55 PM
PSO	Leigh High School	1:05 PM
PSO	Great Oak High School	1:15 PM
PSO	Upland High School	1:25 PM
PSO	Trabuco Hills High School	1:35 PM
PSO	Millikan High School	1:45 PM
PSO	West High School (T)	1:55 PM
PSO	Pacifica High School	2:05 PM
PSO	El Toro High School	2:15 PM
PSO	Carlsbad High School	2:25 PM
PSO	Camarillo High School	2:35 PM
PSO	Cerritos High School	2:45 PM
PSO	Bellflower High School	2:55 PM
PSO	La Cañada High School	3:05 PM
BREAK		3:15 PM
PSO PRELIMS - ROUND 2		
PSO	Stockdale High School	3:30 PM
PSO	Hoover High School	3:40 PM
PSO	Chaparral High School	3:50 PM
PSO	South Torrance High School	4:00 PM
PSO	Rancho Cucamonga High School	4:10 PM
PSO	Fountain Valley High School	4:20 PM
PSO	Valencia High School (P)	4:30 PM
PSO	El Dorado High School	4:40 PM
PSO	Canyon High School (AH)	4:50 PM
PSO	Arroyo High School	5:00 PM
PSO	Cleveland Charter High School	5:10 PM
PSO	Buena High School	5:20 PM
PSO	Chino High School	5:30 PM
BREAK		5:40 PM



Saturday, April 6, 2024

2024 Southern California Percussion Alliance Championships, Prelims / Finals

@ James & Aerianthi Coussoulis Arena, California State University San Bernardino (CSUSB) in San Bernardino, California

Southern California Percussion Alliance (SCPA)

Prelims / Finals Performance Schedule (as of 04/01/24)

CLASS	UNIT	PERFORM
PSW PRELIMS		
PSW	Clovis High School	5:50 PM
PSW	West Ranch High School	6:01 PM
PSW	Ayala High School	6:12 PM
PSW	Chino Hills High School	6:23 PM
PSW	Gahr High School	6:34 PM
PSW	Arcadia High School	6:45 PM
PSW	Rowland High School	6:56 PM
PSW	Etiwanda High School	7:07 PM
PSW	Vista Murrieta High School	7:18 PM
PSW	Homestead High School	7:29 PM
BREAK		7:40 PM
PSJ FINALS		
PSJ	Buena Park Middle School	7:50 PM
PSJ	Canyon Hills Junior High School	7:59 PM
PSJ	Warm Springs Middle School	8:08 PM
PSJ	Rancho Starbuck Intermediate School	8:17 PM
PSJ	Townsend Junior High School	8:26 PM
PSJ	Dorothy McElhinney Middle School	8:35 PM
AWARDS		9:10 PM

* PSO: The Top 3 in each round + next six highest regardless of round advance to finals

Effect - Music I	Chad Heiny	PSCO Prelims
Effect - Visual I	Michael Gaines	PSCW Prelims
Music I	Jeff Ausdemore	PSA Semis - Round 1
Visual I	Steve Collins	PSA Semis - Round 2
Timing & Penalties I	Nick Medeiros	PSW Prelims
Announcer I	Larney Staton	PSJ Finals

Effect - Music II	Bret Kuhn	PIA Prelims
Effect - Visual II	Bobby Jones	PIO Prelims
Music II	Marty Griffin	PSO Prelims - Round 1
Visual II	Austin Greene	PSO Prelims - Round 2
Timing & Penalties II	Bryan Scheidecker & Alex Gray	PIW Prelims
Announcer II	Christopher Rutt	PSJ Finals



Sunday, April 7, 2024

2024 Southern California Percussion Alliance Championships, Prelims / Semifinals

@ James & Aerianthi Coussoulis Arena, California State University San Bernardino (CSUSB) in San Bernardino, California

Southern California Percussion Alliance (SCPA)

Prelims / Semifinals Performance Schedule (as of 03/30/24)

CLASS	UNIT	PERFORM
PIA PRELIMS		
PIA	Canyon Percussion	10:00 AM
PIA	Palm Desert Percussion	10:09 AM
PIA	ECR Independent	10:18 AM
PIA	Cornerstone Percussion	10:27 AM
PIO PRELIMS		
PIO	Linea	10:36 AM
PIO	Meraki	10:46 AM
PIO	OCI	10:56 AM
PIO	Élan Percussion	11:06 AM
PIO	Instinct	11:16 AM
BREAK		11:26 AM
PSA SEMIFINALS - ROUND 1		
PSA	Crescenta Valley High School	11:36 AM
PSA	Warren High School	11:45 AM
PSA	Serrano High School	11:54 AM
PSA	La Habra High School	12:03 PM
PSA	Del Norte High School	12:12 PM
PSA	Westminster High School	12:21 PM
PSA	Bonita High School	12:30 PM
PSA	Mission Viejo High School	12:39 PM
PSA	Helix Charter High School	12:48 PM
PSA	Mira Costa High School	12:57 PM
PSA	Temple City High School	1:06 PM
PSA	Ramona High School	1:15 PM
BREAK		1:24 PM
PSA SEMIFINALS - ROUND 2		
PSA	El Segundo High School	1:39 PM
PSA	Thousand Oaks High School	1:48 PM
PSA	St. Genevieve High School	1:57 PM
PSA	Glen A. Wilson High School	2:06 PM
PSA	Tesoro High School	2:15 PM
PSA	Walnut High School	2:24 PM
PSA	Cypress High School	2:33 PM
PSA	Sunny Hills High School	2:42 PM
PSA	South Hills High School	2:51 PM
PSA	Mission Hills High School	3:00 PM
PSA	Arcadia High School	3:09 PM
PSA	Los Alamitos High School	3:18 PM
BREAK		3:27 PM



Sunday, April 7, 2024

2024 Southern California Percussion Alliance Championships, Prelims / Semifinals

@ James & Aerianthi Coussoulis Arena, California State University San Bernardino (CSUSB) in San Bernardino, California

Southern California Percussion Alliance (SCPA)

Prelims / Semifinals Performance Schedule (as of 03/19/24)

CLASS	UNIT	PERFORM
PIW PRELIMS		
PIW	Pulse Percussion	3:37 PM
PIW	Gold Indoor Percussion	3:48 PM
PIW	POW Percussion	3:59 PM
PIW	Vessel	4:10 PM
PIW	Broken City	4:21 PM
PIW	RCC	4:32 PM
PIW	Dark Sky	4:43 PM
	AWARDS	5:09 PM

* PSA: The Top 3 in each round + next six highest regardless of round advance to finals

Effect - Music I	Chad Heiny	PSCO Prelims
Effect - Visual I	Michael Gaines	PSCW Prelims
Music I	Marty Griffin	PSA Semis - Round 1
Visual I	Steve Collins	PSA Semis - Round 2
Timing & Penalties I	Nick Medeiros	PSW Prelims
Announcer I	Larney Staton	PSJ Finals

Effect - Music II	Bret Kuhn	PIA Prelims
Effect - Visual II	Bobby Jones	PIO Prelims
Music II	Jeff Ausdemore	PSO Prelims - Round 1
Visual II	Austin Greene	PSO Prelims - Round 2
Timing & Penalties II	Bryan Scheidecker & Alex Gray	PIW Prelims
Announcer II	Christopher Rutt	PSJ Finals





SCPA Championship Prelims

Participant Information

Welcome to SCPA Championship Prelims, Semifinals, and PSJ Finals!

Event Location

[Coussoulis Arena at Cal State San Bernardino](#)

5500 University Pkwy,
San Bernardino, CA 92407

Tickets and Seating

Tickets for each day of Prelims / Semifinals are \$25 (plus fees) and are all general admission. Tickets will be [sold exclusively online](#) or via a QR code on-site. No tickets will be sold in person. Once ticket sales meet the capacity limit, sales will close, and no additional tickets will be made available.

Seating is not guaranteed and is available on a first-come, first-served basis. Front-side seating is not guaranteed once those sections hit capacity. It is the spectator's responsibility to ensure they are seated at least 15 minutes before a scheduled performance. Spectator doors will open 30 minutes before the start of the event. Children five and under are free.

Video and Photos

Tripods and/or monopods are prohibited in the stands. No recording or live streaming is permitted. Still photography (without a flash) is welcome for personal, non-commercial use.

Security Screening

Coussoulis Arena conducts security screenings and bag checks. Please allow extra time for entry.

Spectator / Staff Parking

All spectators and staff vehicles will park in the East Parking Structure, PK2 (see campus diagram). Weekend [parking permits](#) are \$3 per day.

Truck & Bus Parking

Ensemble parking is guaranteed for buses, trucks, semis, and carpool vehicles carrying six (6) or more performers. All other vehicles must park in the East

Parking Structure (\$3) on a first-come, first-served basis. Drop-offs cannot be accommodated in the truck/bus parking lot. No RVs are allowed at SCPA events.

Trucks and buses must arrive and unload in parking lot H at their designated time (see schedules and diagrams) and remain there during your ensemble's warm-up and performance time. If vehicles find themselves in the area early, they may wait in lot N for their designated arrival time.

Immediately after your performance and group photo, trucks will need to be reloaded, and then all vehicles will need to relocate to parking lot N for the remainder of the day. Vehicles must vacate parking lot H within 60 minutes after your performance concludes to make room for other ensembles. Lot H is a silent zone.

If you plan to feed your ensemble during the event, please do so in Lot N, in an open space on campus, or off-site. Lot H is for loading and unloading only.

There will be no overnight parking at this event. Please make alternate arrangements.

Restrooms

Restrooms are available in the arena for those with a wristband. Portable restrooms are also available in the truck/bus parking lot (H).

Ensemble Warm-Up

All warm-up will take place according to the logistics schedule and in designated areas (see schedules and diagrams). Warm-up in other areas or at other times is prohibited. Floor tarps (both "practice" and "performance") are not to be pulled out during Championships warm-up. See diagrams for warm-up orientation. Face your ensemble in the direction

indicated by the arrow. All equipment must be removed from the warm-up area before you depart for your performance.

Arena Transit

Ensembles departing the warm-up area to push to the arena will use the cement walkway for entrance transit (see diagrams).

Ensembles exiting the floor folding area will use the paved access road to push back to the truck/bus parking lots (see diagrams).

Non-Performing Helpers

Up to a maximum of twenty (20) non-performing helpers (staff, parents, etc.) may assist an ensemble with entry, setup, and exit. This will be strictly enforced at ensemble entry.

Non-performing helpers will need to be wearing their floor-access credentials (available in your check-in packet) and will also need a wristband or director badge for the event.

Pre-Stage

As your ensemble approaches the arena doors, you can pre-stage some of your equipment and/or instruments inside the arena, with the rest remaining in the tunnel until your scheduled performance time. Once the group on the floor begins their performance, the arena doors will close and remain so for the duration of the performance.

We recommend arriving with a clear plan concerning what and/or who your ensemble chooses to stage in the arena and in the tunnel. Those in the arena need to ensure they are not a distraction.

Designated Viewing Locations

Please see diagrams for the designated sound engineer and non-performing helper viewing locations. There will be exactly three (3) seats “up top” for a sound engineer and two key staff members and eighteen (18) additional seats “down low” for the remainder of your group’s non-performing helpers. All assisting personnel are required to sit in the designated areas.

Staff members are asked not to rush up and down the stairs as this is a distraction to the audience and

adjudicators. There is to be no sitting on the stairs or aisles.

Ensemble Photo

After your performance, proceed to the floor folding area, where you’ll have one interval time to fold your floor. Please be mindful of time, as another ensemble will be out shortly. Then, proceed to the ensemble photo area a short way down the access road and place your equipment out of the way of other ensembles. Once you’ve taken your photo, return your equipment to the bus/truck lot and load your truck.

Awards Retreat

Retreat for all Prelims and Semifinals rounds will be captains only. Retreat for PSJ Finals will be a full retreat for all performing members. All those participating in retreat need to report to the floor folding area immediately following the last performance. *The last three performing PSJ ensembles will leave their equipment near the floor folding area and return it to their truck after awards.*

Advancing to Semifinals & Finals

The top three ensembles in each PSA Prelims round will advance to Semifinals. The final 12 positions in Semifinals will be filled by wild card ensembles. Rounds 1 and 3 will be adjudicated by the same panel of judges; as such, these scores will be comparable. The next six highest-scoring ensembles from Rounds 1 and 3 combined will advance to Semifinals. The same process will be used with Rounds 2 and 4 to select the final six wildcard semifinalists in PSA.

The top three ensembles in each PSA Semifinals round will advance to Finals. The final six positions in Finals will be filled by the next six highest-scoring wildcard ensembles from either round of Semifinals.

The top three ensembles in each PSO round will advance to Finals. The final six positions in Finals will be filled by the next six highest-scoring wildcard ensembles from either round.

The top-scoring ensembles in PIA, PSCA, PIO, PSCO, PSCW, PSW, and PIW will advance to Finals.

Regardless of rank, a minimum gross score of “75.00” must be achieved to advance to Finals.



Adjudication Panels

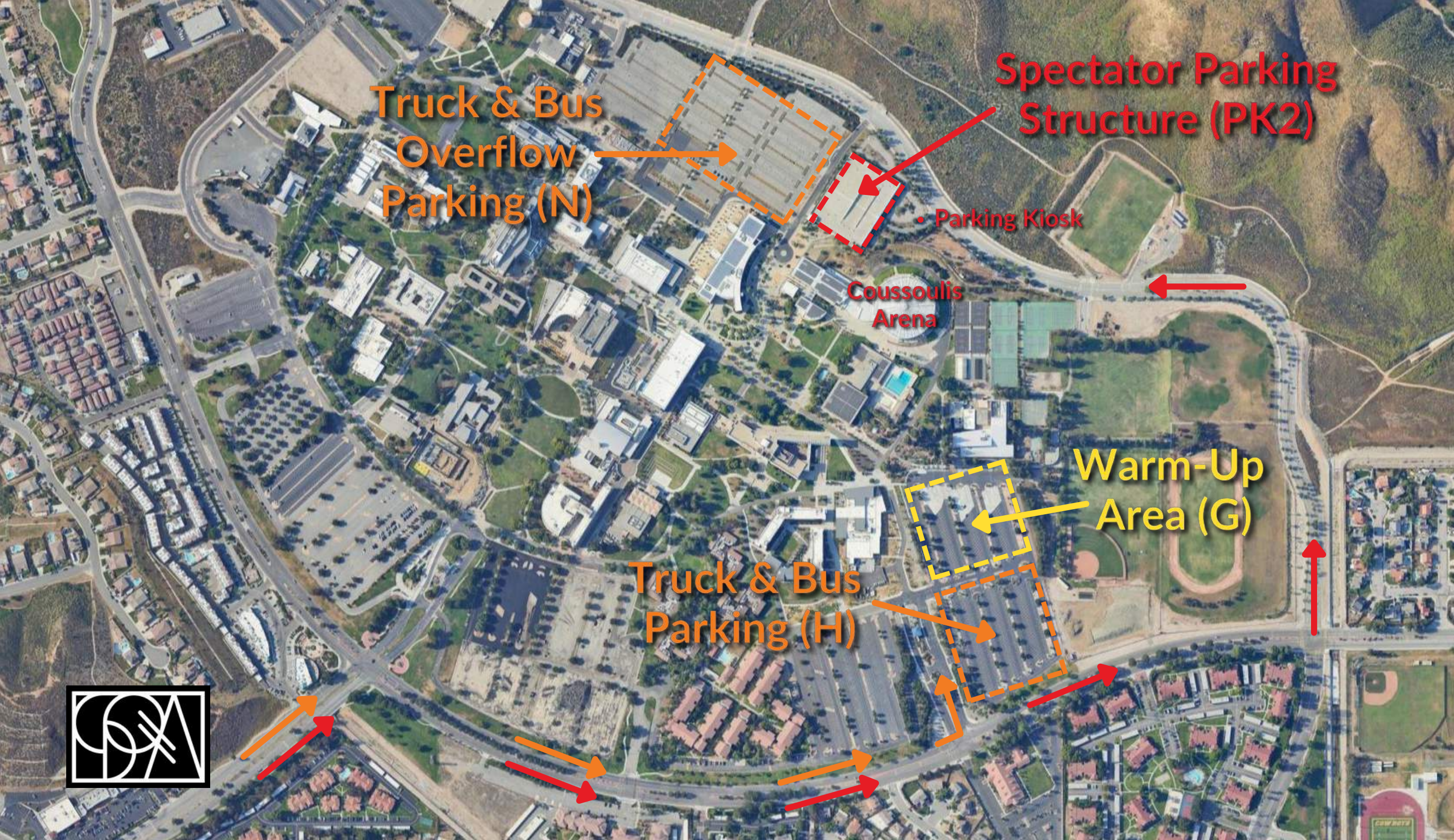
Coussoulis Arena

2024 SCPA Championship Prelims for PSCA & PSA

Panel 1
Effect-Music: Jay Kennedy
Effect-Visual: Jim Shade
Music: Julie Davila
Visual: Charles Craig
Timing & Penalties: Alex Gray
Announcer: Larney Staton

Panel 2
Effect-Music: Michael McIntosh
Effect-Visual: Matt Stevens
Music: JJ Pipitone
Visual: Fernando Miller
Timing & Penalties: Connor Kobayashi
Announcer: Christopher Rutt

Saturday, March 30, 2024
PSCA Prelims Panel 1
PSA Prelims - Round 1 Panel 2
PSA Prelims - Round 2 Panel 1
PSA Prelims - Round 3 Panel 2
PSA Prelims - Round 4 Panel 1



Truck & Bus
Overflow
Parking (N)

Spectator Parking
Structure (PK2)

• Parking Kiosk

Coussoulis
Arena

Warm-Up
Area (G)

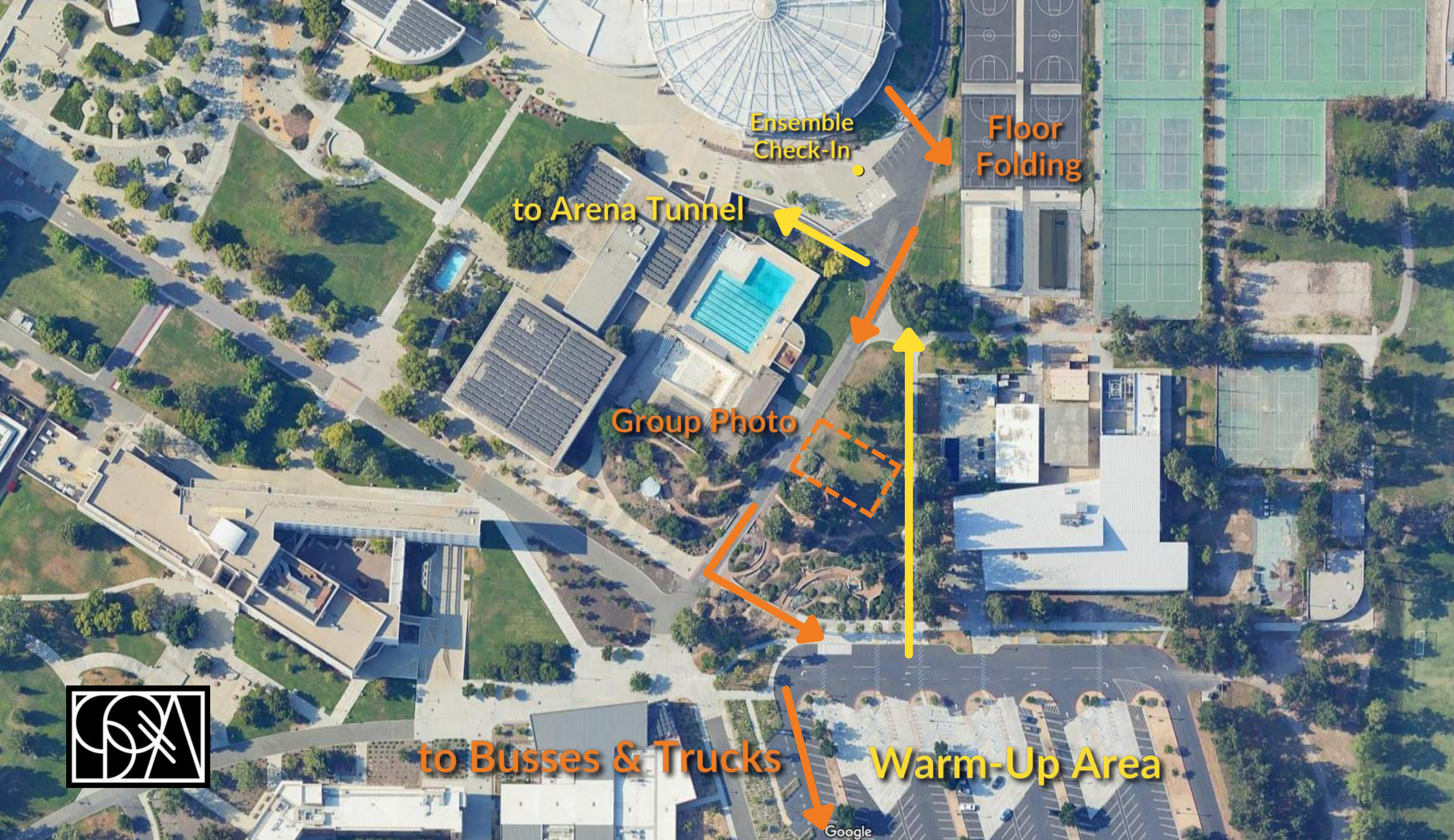
Truck & Bus
Parking (H)



Entry Walkway to Arena



*Red arrow denotes front ensemble / speaker orientation



Ensemble
Check-In

Floor
Folding

to Arena Tunnel

Group Photo

to Busses & Trucks

Warm-Up Area



Google



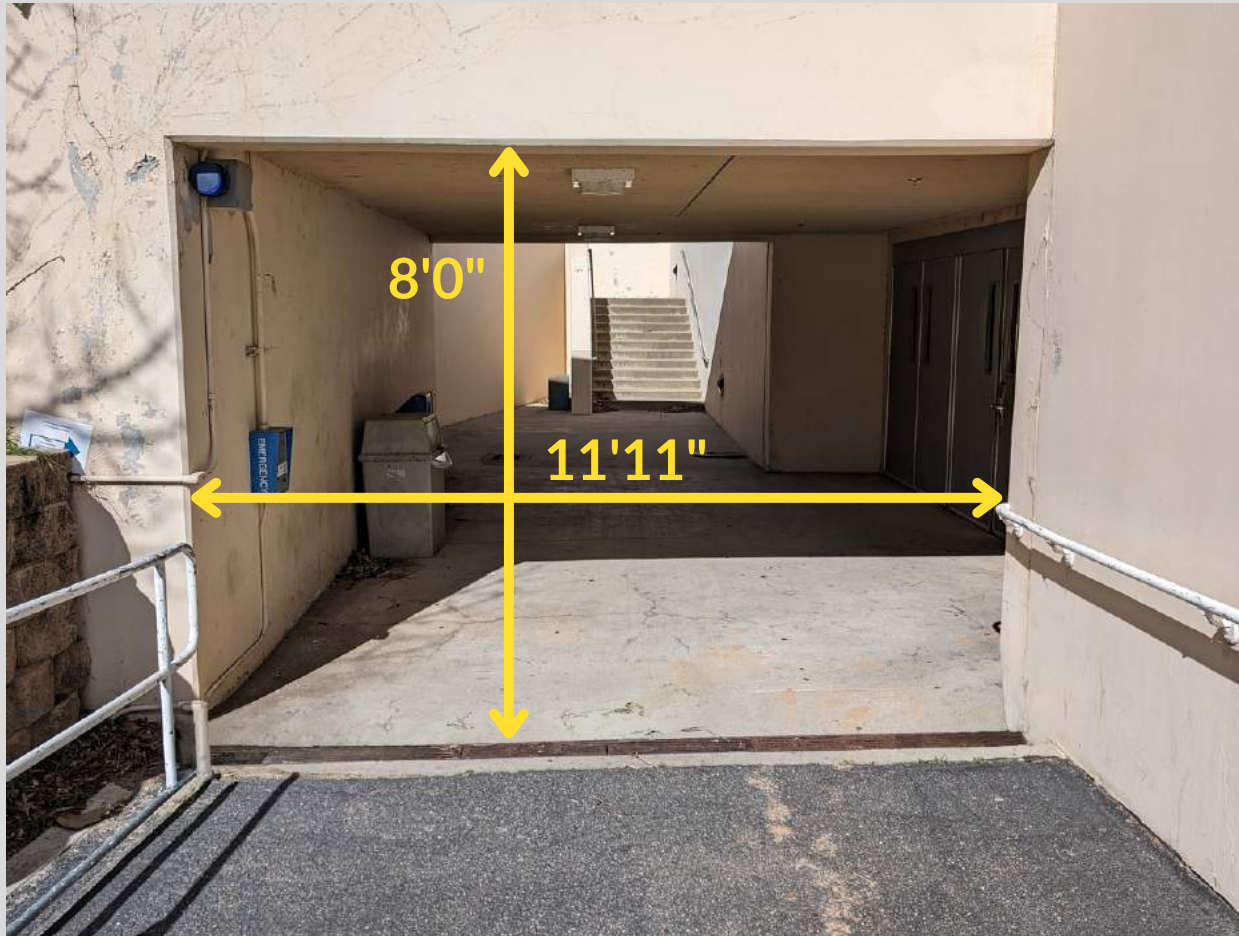
Ensemble Entry Walkway to Arena



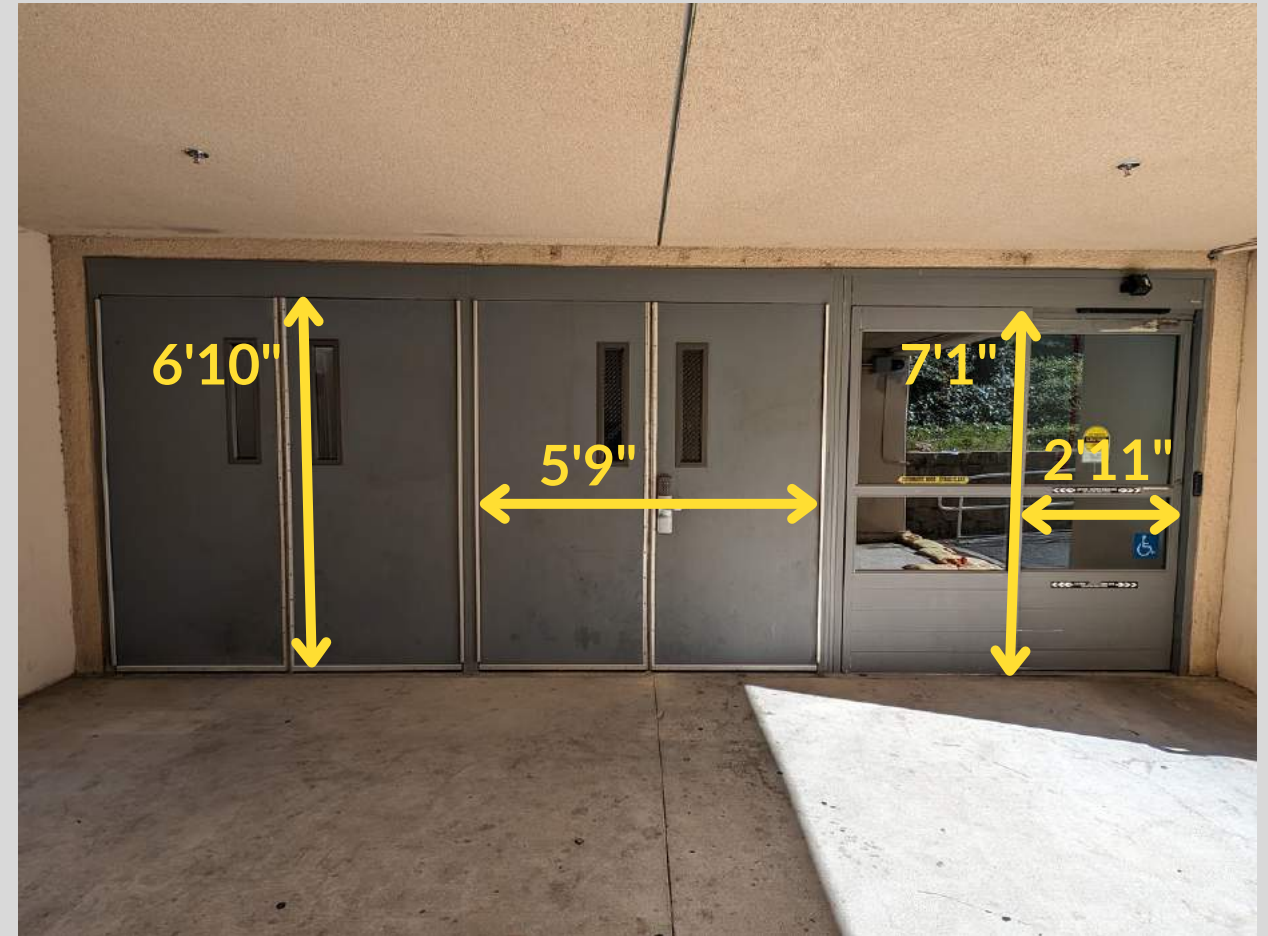
Ramp to Performance Entry



Coussoulis Arena



Ramp Overpass



Tunnel Entry Doors
(2 double doors; 1 sliding door)



Coussoulis Arena



Tunnel



Entry Doors
(1 single door; 2 double doors)



Coussoulis Arena



Exit Doors
(3 double doors)

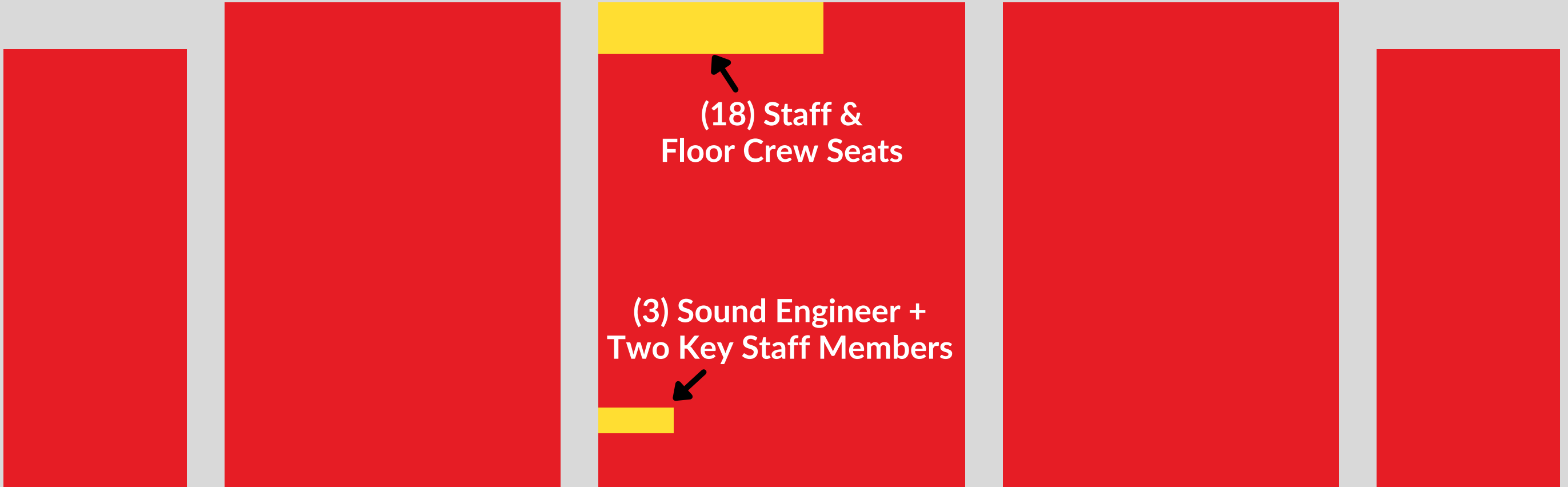


Exit Doors to Floor Folding
(3 double doors)



Coussoulis Arena

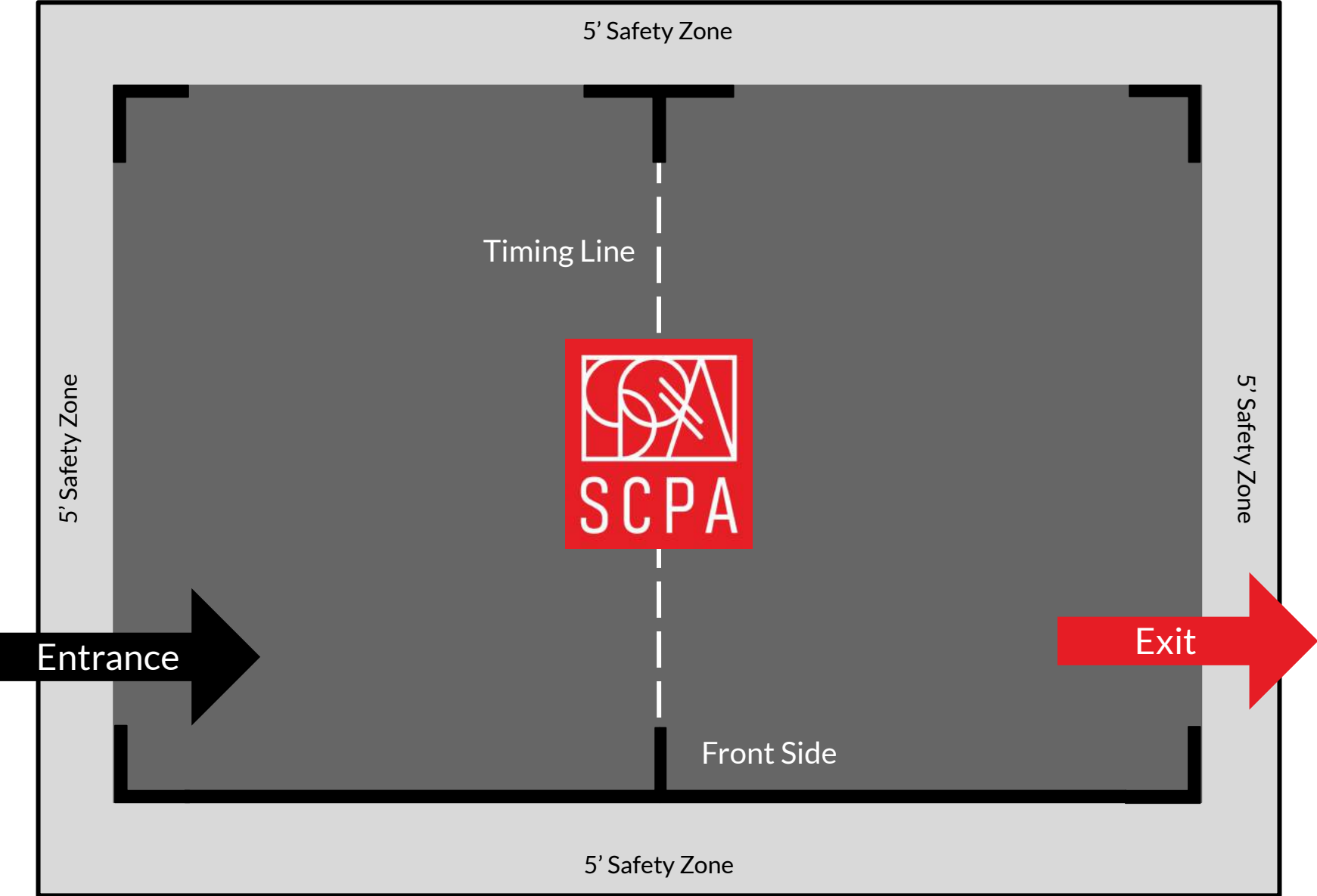
Competition Area



Coussoulis Arena

Southern California Percussion Alliance

Coussoulis Arena





FINALS

INFO

Saturday, April 13, 2024

2024 Southern California Percussion Alliance Championships, Finals

@ James & Aerianthi Coussoulis Arena, California State University San Bernardino (CSUSB) in San Bernardino, California

Southern California Percussion Alliance (SCPA)

ITINERARY

TIME EVENT

- TBD* Report (*Eat a hearty breakfast & Hair Done*)
- TBD* Load Trucks & Make-Up Done
Change into uniform after loading
- TBD* All Drivers Meet at THHS and Check-In
- TBD* Depart from Trabuco Hills High School
- TBD* Arrive at California State University San Bernardino
- TBD* Unload Trucks
- TBD* Walk to Warm-up Area
- TBD* Tuning / Sectionals
- TBD* Full Ensemble Warm-up
Lot Full Run
- TBD* Depart from Warm-up
- TBD* Staging Area
- 1:01 PM PSO Finals Performances Begin**
- TBD* Fold Floor
Load Trucks
- TBD* Lunch (*provided by the boosters*)
- TBD* Time Block - TBD*
- TBD* Get Dressed in Uniform
Watch Warm-Up in Lots
- TBD* In the Arena to Watch PSW & PIW Finals
- 4:20 PM Finals Awards - Full Retreat
- 5:15 PM Depart from California State University San Bernardino
- 6:15 PM Approximate Arrival at Trabuco Hills High School
- 6:20 PM Unload Instruments, Equipment and Clean-Up
- 6:45 PM Roll-Call & Approximate Dismissal

**STUDENTS WILL NOT BE DISMISSED UNTIL THE TRUCK IS FULLY UNLOADED.
FEEL FREE TO HELP EXPEDITE THE PROCESS WHILE YOU WAIT FOR THEM.**

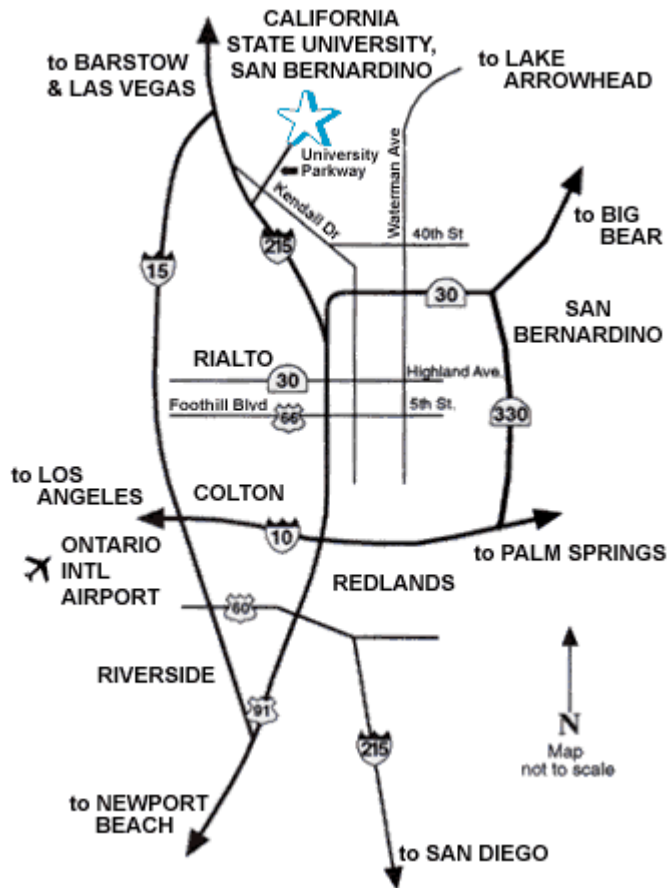
REMINDERS

- All SVUSD and Music Program expectations and policies apply while traveling to/from and at the show site.
- Dress Attire: Jeans, Polos Tucked In, Belt, Approved Outwear, No Hats or Beanies after the performance
- The entire Percussion Ensemble must sit together inside the Arena

***** Please keep in mind, no schedule is sacred and always subject to change!!!**



DIRECTIONS FROM TRABUCO HILLS HIGH SCHOOL



California State University, San Bernardino (CSUSB)
5500 University Parkway
San Bernardino, California 92407-2318

Via The Toll Roads

- Take SR-241 Toll Road North towards Riverside
- The Tomato Springs Toll Plaza is \$4.28 and the Windy Ridge Toll Plaza is \$4.49
- Take SR-91 Freeway East towards Riverside
- Pass the I-15 Freeway and the I-10 Freeway
- Take I-215 Freeway North
- Exit University Parkway and turn right
- Turn right on Northpark Boulevard

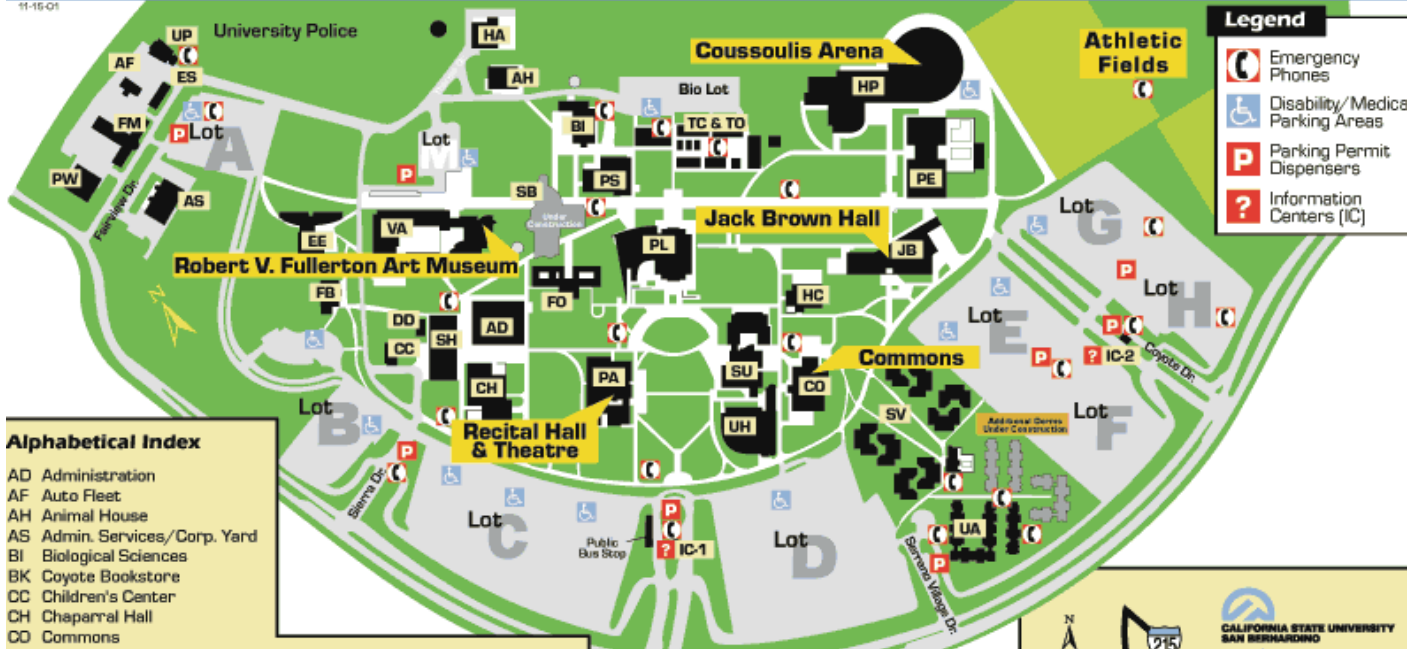
Without The Toll Roads

- Take I-5 Freeway North towards Santa Ana
- Take SR-55 Freeway North
- Take SR-91 Freeway East towards Riverside
- Pass the I-15 Freeway and the I-10 Freeway
- Take I-215 Freeway North
- Exit University Parkway and turn right
- Turn right on Northpark Boulevard

CALIFORNIA STATE UNIVERSITY, SAN BERNARDINO

Campus Map

11-16-01



Alphabetical Index

AD Administration	PE Physical Education
AF Auto Fleet	PL John M. Pfau Library
AH Animal House	PS Physical Sciences
AS Admin. Services/Corp. Yard	PW Central Warehouse
BI Biological Sciences	SB Social & Behavioral Sciences
BK Coyote Bookstore	SH Sierra Hall
CC Children's Center	SU Student Union
CH Chaparral Hall	SV Serrano Village
CD Commons	TC Temp. Classrooms
DD Univ. Center for Developmental Disabilities	TO Temp. Offices
EE Yasuda Center for Ext. Educ.	UA University Apartments
ES Environmental Safety	UH University Hall
FB Foundation Building	UP University Police
FM Facilities Management	VA Visual Arts Center/Robert V. Fullerton Art Museum
FO Faculty Office Building	
HA HVAC Central Plant	
HC Health Center	
HP Health and PE Complex/Coussoulis Arena	
IC Information Centers	
JB Jack H. Brown Hall	
PA Performing Arts/Theatre/Recital Hall	

University Parkway
 ← to 215 Freeway

Northpark Blvd.

**CALIFORNIA STATE UNIVERSITY
 SAN BERNARDINO**

5500 University Parkway
 San Bernardino, CA 92407
 (909) 880-5000 www.csusb.edu



Saturday, April 13, 2024

2024 Southern California Percussion Alliance Championships, Finals

@ James & Aerianthi Coussoulis Arena, California State University San Bernardino (CSUSB) in San Bernardino, California

Southern California Percussion Alliance (SCPA)

Finals Performance Schedule (as of 04/07/24)

CLASS	UNIT	PERFORM
PSA FINALS		
PSA	Mission Viejo High School	9:00 AM
PSA	Cypress High School	9:09 AM
PSA	Mira Costa High School	9:18 AM
PSA	Bonita High School	9:27 AM
PSA	South Hills High School	9:36 AM
PSA	Sunny Hills High School	9:45 AM
PSA	Mission Hills High School	9:54 AM
PSA	Ramona High School	10:03 AM
PSA	Helix Charter High School	10:12 AM
PSA	Arcadia High School	10:21 AM
PSA	Los Alamitos High School	10:30 AM
PSA	Temple City High School	10:39 AM
BREAK		10:48 AM
PIA FINALS		
PIA	Palm Desert Percussion	10:58 AM
PIA	ECR Independent	11:07 AM
PIA	Cornerstone Percussion	11:16 AM
BREAK		11:25 AM
PSCA FINALS		
PSCA	St. Genevieve Parish Schools	11:35 AM
PSCA	Aliso Niguel High School	11:44 AM
PSCA	Esperanza High School	11:53 AM
PSCA	Eleanor Roosevelt High School	12:02 PM
BREAK		12:11 PM
PSCO FINALS		
PSCO	Diamond Bar High School	12:21 PM
PSCO	Chaffey High School	12:31 PM
PSCO	Notre Dame High School	12:41 PM
BREAK		12:51 PM



Saturday, April 13, 2024

2024 Southern California Percussion Alliance Championships, Finals

@ James & Aerianthi Coussoulis Arena, California State University San Bernardino (CSUSB) in San Bernardino, California

Southern California Percussion Alliance (SCPA)

Finals Performance Schedule (as of 04/07/24)

CLASS	UNIT	PERFORM
PSO FINALS		
PSO	Stockdale High School	1:01 PM
PSO	Rancho Verde High School	1:11 PM
PSO	Fountain Valley High School	1:21 PM
PSO	Valencia High School (P)	1:31 PM
PSO	Chino High School	1:41 PM
PSO	Cleveland Charter High School	1:51 PM
PSO	El Dorado High School	2:01 PM
PSO	Cerritos High School	2:11 PM
PSO	South Torrance High School	2:21 PM
PSO	Pacifica High School	2:31 PM
PSO	Great Oak High School	2:41 PM
PSO	Rancho Cucamonga High School	2:51 PM
BREAK		3:01 PM
PIO FINALS		
PIO	Instinct	3:11 PM
PIO	Élan Percussion	3:21 PM
PIO	OCI	3:31 PM
PIO	Meraki	3:41 PM
AWARDS		4:20 PM



Saturday, April 13, 2024

2024 Southern California Percussion Alliance Championships, Finals

@ James & Aerianthi Coussoulis Arena, California State University San Bernardino (CSUSB) in San Bernardino, California

Southern California Percussion Alliance (SCPA)

Finals Performance Schedule (as of 04/07/24)

CLASS	UNIT	PERFORM
PSW FINALS		
PSW	West Ranch High School	6:00 PM
PSW	Rowland High School	6:11 PM
PSW	Clovis High School	6:22 PM
PSW	Gahr High School	6:33 PM
PSW	Arcadia High School	6:44 PM
PSW	Etiwanda High School	6:55 PM
PSW	Ayala High School	7:06 PM
PSW	Vista Murrieta High School	7:17 PM
PSW	Chino Hills High School	7:28 PM
BREAK		7:39 PM
PSCW FINALS		
PSCW	Rowland High School	7:49 PM
PSCW	Eleanor Roosevelt High School	8:00 PM
PSCW	Woodbridge High School	8:11 PM
PSCW	West Ranch High School	8:22 PM
PSCW	Ayala High School	8:33 PM
BREAK		8:44 PM
PIW FINALS		
PIW	Vessel	8:54 PM
PIW	Gold Indoor Percussion	9:05 PM
PIW	Dark Sky	9:16 PM
PIW	POW Percussion	9:27 PM
PIW	Broken City	9:38 PM
PIW	RCC	9:49 PM
PIW	Pulse Percussion	10:00 PM
AWARDS		10:30 PM



Saturday, April 13, 2024

2024 Southern California Percussion Alliance Championships, Finals

@ James & Aerialthi Coussoulis Arena, California State University San Bernardino (CSUSB) in San Bernardino, California

Southern California Percussion Alliance (SCPA)

Finals Performance Schedule (as of 04/07/24)

CLASS	UNIT	PERFORM
Effect - Music I	Ray Ulibarri	
Effect - Music II	Terry Sanders	
Effect - Visual I	Tim Fairbanks	
Effect - Visual II	Blair Kuhn	PSA PSCO
Music I	Tom Rarick	PIW
Music II	Mike Leitzke	
Visual I	Mark Metz	
Visual II	Bret Mascaro	

Effect - Music I	Terry Sanders	
Effect - Music II	Matt Jordan	
Effect - Visual I	Blair Kuhn	
Effect - Visual II	Mark Waymire	PIA PSO
Music I	Mike Leitzke	PSCW
Music II	Chris Rapacki	
Visual I	Bret Mascaro	
Visual II	Ron Hardin	

Effect - Music I	Matt Jordan	
Effect - Music II	Ray Ulibarri	
Effect - Visual I	Mark Waymire	
Effect - Visual II	Tim Fairbanks	PSCA PIO
Music I	Chris Rapacki	PSW
Music II	Tom Rarick	
Visual I	Ron Hardin	
Visual II	Mark Metz	

Timing & Penalties I	Connor Kobayashi	PSA, PIA, PSCO, PSW
Timing & Penalties II	Christopher Rutt	

Announcer I	Alex Gray	PSCA, PSO, PIO, PSCW, PIW
Announcer II	Larney Staton	





SCPA Championship Finals

Participant Information

Welcome to SCPA Championship A Class & Open Class Finals!

Event Location

[Coussoulis Arena at Cal State San Bernardino](#)

5500 University Pkwy,
San Bernardino, CA 92407

Tickets and Seating

Tickets for A & Open Class Finals are \$25 (plus fees) and are all general admission. Tickets will be [sold exclusively online](#) or via a QR code on-site. No tickets will be sold in person. Finals events are anticipated to sell out; once ticket sales meet the capacity limit, sales will close, and no additional tickets will be made available.

Seating is not guaranteed and is available on a first-come, first-served basis. Front-side seating is not guaranteed once those sections hit capacity. It is the spectator's responsibility to ensure they are seated at least 15 minutes before a scheduled performance. Spectator doors will open 30 minutes before the start of the event. Children five and under are free.

Video and Photos

Tripods and/or monopods are prohibited in the stands. No recording or live streaming is permitted. Still photography (without a flash) is welcome for personal, non-commercial use.

Security Screening

Coussoulis Arena conducts security screenings and bag checks. Please allow extra time for entry.

Spectator / Staff Parking

All spectators and staff vehicles will park in the East Parking Structure, PK2 (see campus diagram). Weekend [parking permits](#) are \$3 per day.

Truck & Bus Parking

Ensemble parking is guaranteed for buses, trucks, semis, and carpool vehicles carrying six (6) or more performers. All other vehicles must park in the East Parking Structure (\$3) on a first-come, first-served basis. Drop-offs cannot be accommodated in the truck/bus parking lot. No RVs are allowed at SCPA events.

Trucks and buses must arrive and unload in parking lot H at their designated time (see schedules and diagrams) and remain there during your ensemble's warm-up and performance time. If vehicles find themselves in the area early, they may wait in lot N for their designated arrival time.

Immediately after your performance, trucks will need to be reloaded, and then all vehicles will need to relocate to parking lot N for the remainder of the day. Vehicles must vacate parking lot H within 60 minutes after your performance concludes to make room for other ensembles. Lot H is a silent zone.

If you plan to feed your ensemble during the event, please do so in Lot N, in an open space on campus, or off-site. Lot H is for loading and unloading only.

Restrooms

Restrooms are available in the arena for those with a wristband. Portable restrooms are also available in the truck/bus parking lot (H).

Ensemble Warm-Up

All warm-up will take place according to the logistics schedule and in designated areas (see schedules and diagrams). Warm-up in other areas or at other times is prohibited. Floor tarps (both "practice" and "performance") are not to be pulled out during Championships warm-up. See diagrams for warm-up orientation. Face your ensemble in the direction

indicated by the arrow. All equipment must be removed from the warm-up area before you depart for your performance.

Arena Transit

Ensembles departing the warm-up area to push to the arena will use the cement walkway for entrance transit (see diagrams).

Ensembles exiting the floor folding area will use the paved access road to push back to the truck/bus parking lots (see diagrams).

Non-Performing Helpers

Up to a maximum of twenty (20) non-performing helpers (staff, parents, etc.) may assist an ensemble with entry, setup, and exit. This will be strictly enforced at ensemble entry.

Non-performing helpers will need to be wearing their floor-access credentials (available in your check-in packet) and will also need a wristband or director badge for the event.

Pre-Stage

As your ensemble approaches the arena doors, you can pre-stage some of your equipment and/or instruments inside the arena, with the rest remaining in the tunnel until your scheduled performance time. Once the group on the floor begins their performance, the arena doors will close and remain so for the duration of the performance.

We recommend arriving with a clear plan concerning what and/or who your ensemble chooses to stage in

the arena and in the tunnel. Those in the arena need to ensure they are not a distraction.

Designated Viewing Locations

Please see diagrams for the designated sound engineer and non-performing helper viewing locations. There will be exactly three (3) seats “up top” for a sound engineer and two key staff members and eighteen (18) additional seats “down low” for the remainder of your group’s non-performing helpers. All assisting personnel are required to sit in the designated areas.

Staff members are asked not to rush up and down the stairs as this is a distraction to the audience and adjudicators. There is to be no sitting on the stairs or aisles.

Awards Retreat

Retreat for Finals is a full retreat for all performing members. All those participating in retreat need to report to the floor folding area immediately following the last performance.

The last three performing PIO ensembles will leave their equipment near the floor folding area and return it to their truck after awards.

Following the final score announcement, ensembles will be excused to leave the floor one at a time in reverse order of entry. Ensembles are encouraged to celebrate their accomplishments, distribute any medals earned, and take photos outside in the floor folding area following the conclusion of the event.

Instructors and parents seated in the spectator area will not have access to the arena floor and will need to exit out of the main doors at the conclusion of the event.

SCPA encourages performers to wear any medals previously earned at SCPA or WGI events for Finals retreat.



Adjudication Panels

Coussoulis Arena

2024 SCPA Championship Finals

Class	Effect-Music / Artistry	Effect-Visual	Music	Visual	T&P	Announcer
PSA	Ulibarri	Fairbanks	Rarick	Metz	Kobayashi	Rutt
	Sanders	Kuhn	Leitzke	Mascaro		
PIA	Sanders	Kuhn	Leitzke	Mascaro	Kobayashi	Rutt
	Jordan	Waymire	Rapacki	Hardin		
PSCA	Jordan		Rapacki		Gray	Staton
	Ulibarri		Rarick			
PSCO	Ulibarri		Rarick		Kobayashi	Rutt
	Sanders		Leitzke			
PSO	Sanders	Kuhn	Leitzke	Mascaro	Gray	Staton
	Jordan	Waymire	Rapacki	Hardin		
PIO	Jordan	Waymire	Rapacki	Hardin	Gray	Staton
	Ulibarri	Fairbanks	Rarick	Metz		

PSW	Ulibarri	Fairbanks	Rarick	Metz	Kobayashi	Rutt
	Jordan	Waymire	Rapacki	Hardin		
PSCW	Jordan		Rapacki		Gray	Staton
	Sanders		Leitzke			
PIW	Sanders	Kuhn	Leitzke	Mascaro	Gray	Staton
	Ulibarri	Fairbanks	Rarick	Metz		



SCPA Championship Finals

Participant Information

Welcome to SCPA Championship World Class Finals!

Event Location

[Coussoulis Arena at Cal State San Bernardino](#)

5500 University Pkwy,
San Bernardino, CA 92407

Tickets and Seating

Seats for World Class Finals are all individually ticketed and are \$50, \$40, and \$30 (plus fees) depending on the section selected. Tickets will be [sold exclusively online](#) or via a QR code on-site. No tickets will be sold in person. Children 2 and under are free if sitting on a parent's lap. Any child needing their own seat will need a ticket.

Finals events are anticipated to sell out; once ticket sales meet the capacity limit, sales will close, and no additional tickets will be made available.

It is the spectator's responsibility to ensure they are seated at least 15 minutes before a scheduled performance. Spectator doors will open 30 minutes before the start of the event.

Video and Photos

Tripods and/or monopods are prohibited in the stands. No recording or live streaming is permitted. Still photography (without a flash) is welcome for personal, non-commercial use.

Security Screening

Coussoulis Arena conducts security screenings and bag checks. Please allow extra time for entry.

Spectator / Staff Parking

All spectators and staff vehicles will park in the East Parking Structure, PK2 (see campus diagram). Weekend [parking permits](#) are \$3 per day.

Truck & Bus Parking

Ensemble parking is guaranteed for buses, trucks, semis, and carpool vehicles carrying six (6) or more performers. All other vehicles must park in the East Parking Structure (\$3) on a first-come, first-served basis. Drop-offs cannot be accommodated in the truck/bus parking lot. No RVs are allowed at SCPA events.

Trucks and buses must arrive and unload in parking lot H at their designated time (see schedules and diagrams) and remain there during your ensemble's warm-up and performance time. If vehicles find themselves in the area early, they may wait in lot N for their designated arrival time.

Immediately after your performance, trucks will need to be reloaded, and then all vehicles will need to relocate to parking lot N for the remainder of the day. Vehicles must vacate parking lot H within 60 minutes after your performance concludes to make room for other ensembles. Lot H is a silent zone.

If you plan to feed your ensemble during the event please do so in Lot N, in an open space on campus, or off-site. Lot H is for loading and unloading only.

Restrooms

Restrooms are available in the arena for those with a wristband. Portable restrooms are also available in the truck/bus parking lot (H).

Ensemble Warm-Up

All warm-up will take place according to the logistics schedule and in designated areas (see schedules and diagrams). Warm-up in other areas or at other times is prohibited. Floor tarps (both "practice" and "performance") are not to be pulled out during Championships warm-up. See diagrams for warm-up orientation. Face your ensemble in the direction

indicated by the arrow. All equipment must be removed from the warm-up area before you depart for your performance.

Arena Transit

Ensembles departing the warm-up area to push to the arena will use the cement walkway for entrance transit (see diagrams).

Ensembles exiting the floor folding area will use the paved access road to push back to the truck/bus parking lots (see diagrams).

Non-Performing Helpers

Up to a maximum of twenty (20) non-performing helpers (staff, parents, etc.) may assist an ensemble with entry, setup, and exit. This will be strictly enforced at ensemble entry.

Non-performing helpers will need to be wearing their floor-access credentials (available in your check-in packet) and will also need a wristband or director badge for the event.

Pre-Stage

As your ensemble approaches the arena doors, you can pre-stage some of your equipment and/or instruments inside the arena, with the rest remaining in the tunnel until your scheduled performance time. Once the group on the floor begins their performance, the arena doors will close and remain so for the duration of the performance.

We recommend arriving with a clear plan concerning what and/or who your ensemble chooses to stage in

the arena and in the tunnel. Those in the arena need to ensure they are not a distraction.

Designated Viewing Locations

Please see diagrams for the designated sound engineer and non-performing helper viewing locations. There will be exactly three (3) seats “up top” for a sound engineer and two key staff members and eighteen (18) additional seats “down low” for the remainder of your group’s non-performing helpers. All assisting personnel are required to sit in the designated areas.

Staff members are asked not to rush up and down the stairs as this is a distraction to the audience and adjudicators. There is to be no sitting on the stairs or aisles.

Awards Retreat

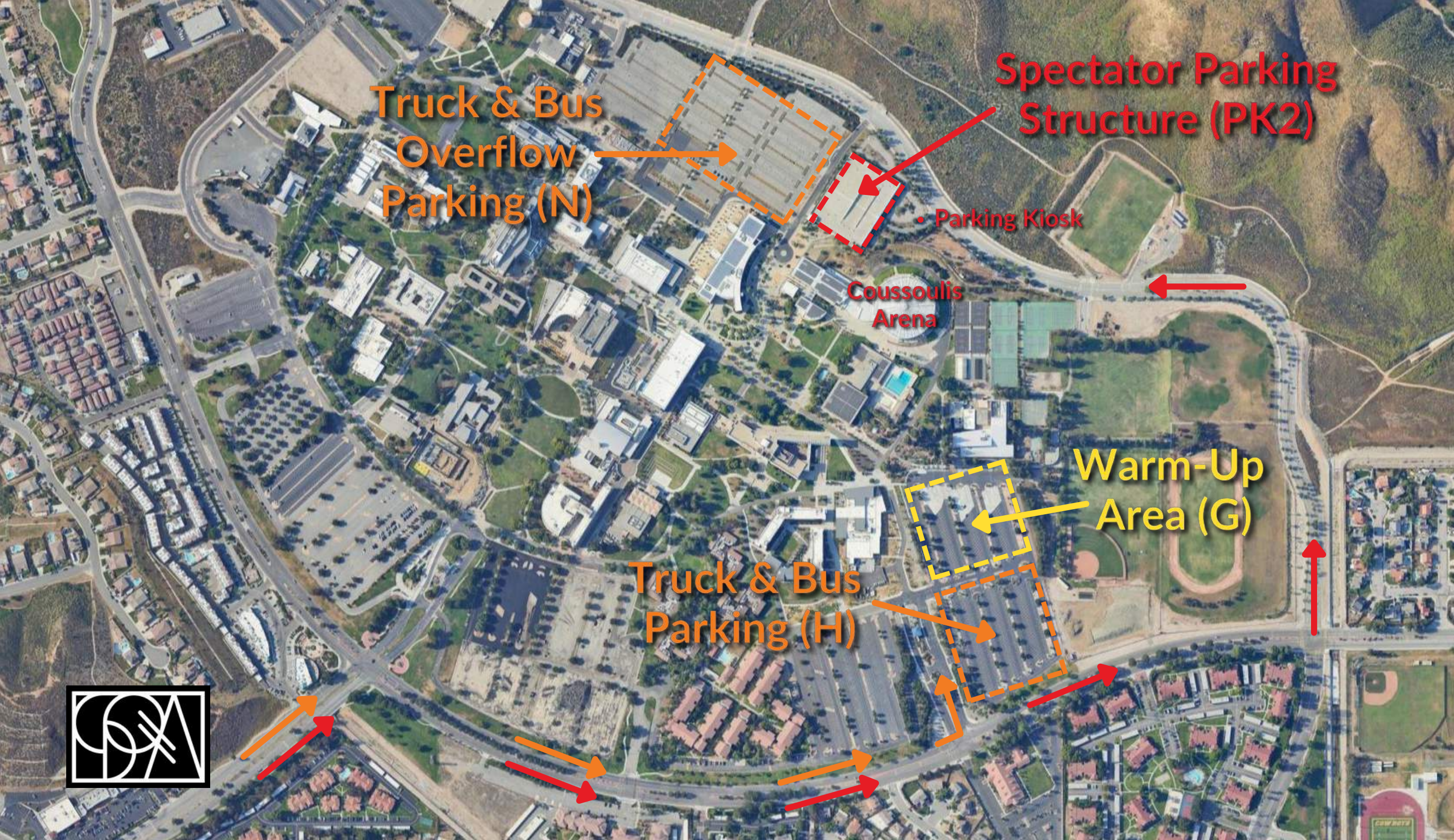
Retreat for Finals is a full retreat for all performing members. All those participating in retreat need to report to the floor folding area immediately following the last performance.

The last three performing PIW ensembles will leave their equipment near the floor folding area and return it to their truck after awards.

Following the final score announcement, ensembles will be excused to leave the floor one at a time in reverse order of entry. Ensembles are encouraged to celebrate their accomplishments, distribute any medals earned, and take photos outside in the floor folding area following the conclusion of the event.

Instructors and parents seated in the spectator area will not have access to the arena floor and will need to exit out of the main doors at the conclusion of the event.

SCPA encourages performers to wear any medals previously earned at SCPA or WGI events for Finals retreat.



Truck & Bus
Overflow
Parking (N)

Spectator Parking
Structure (PK2)

• Parking Kiosk

Coussoulis
Arena

Warm-Up
Area (G)

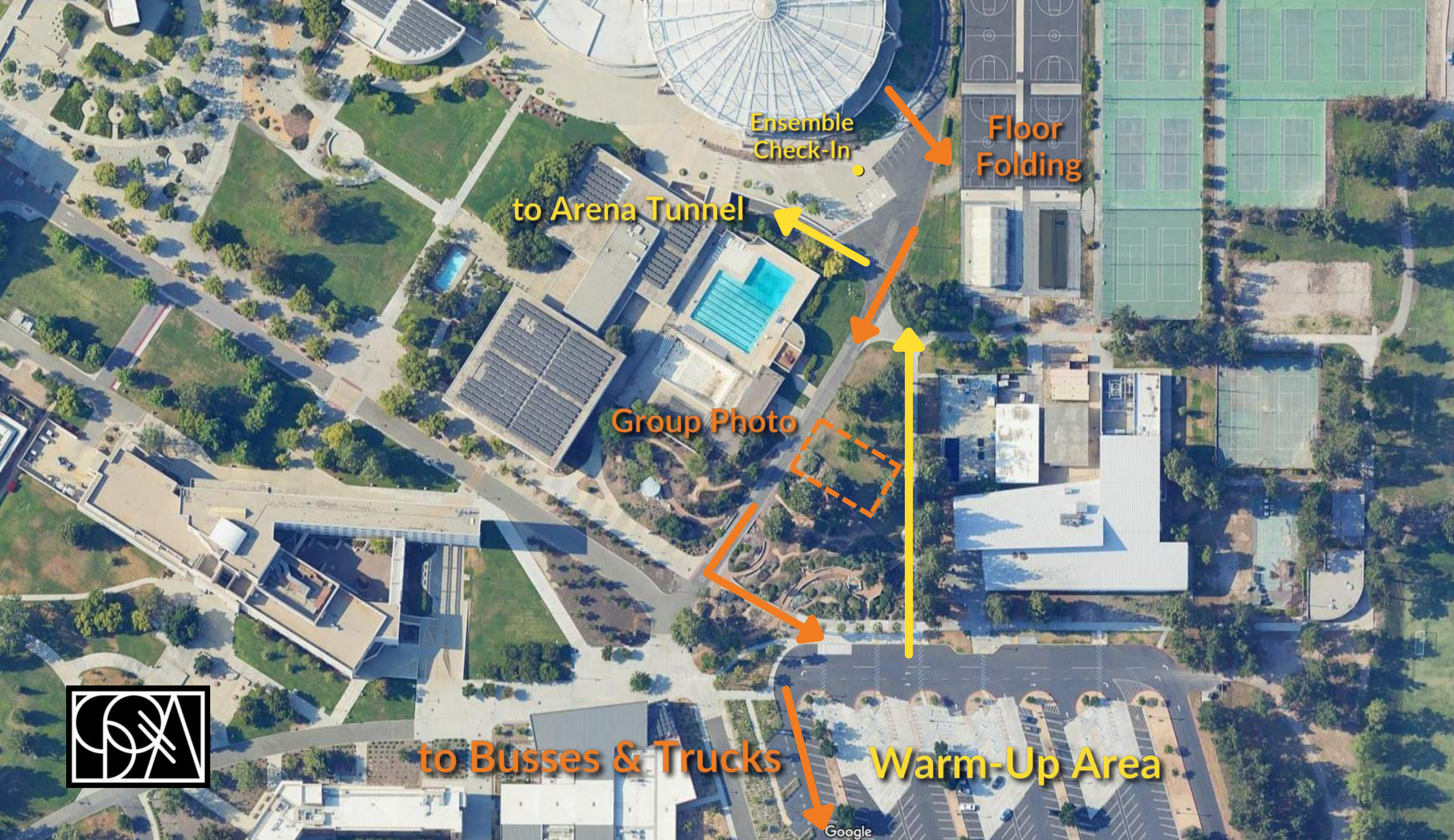
Truck & Bus
Parking (H)



Entry Walkway to Arena



*Red arrow denotes front ensemble / speaker orientation



Ensemble
Check-In

Floor
Folding

to Arena Tunnel

Group Photo

to Busses & Trucks

Warm-Up Area



Google



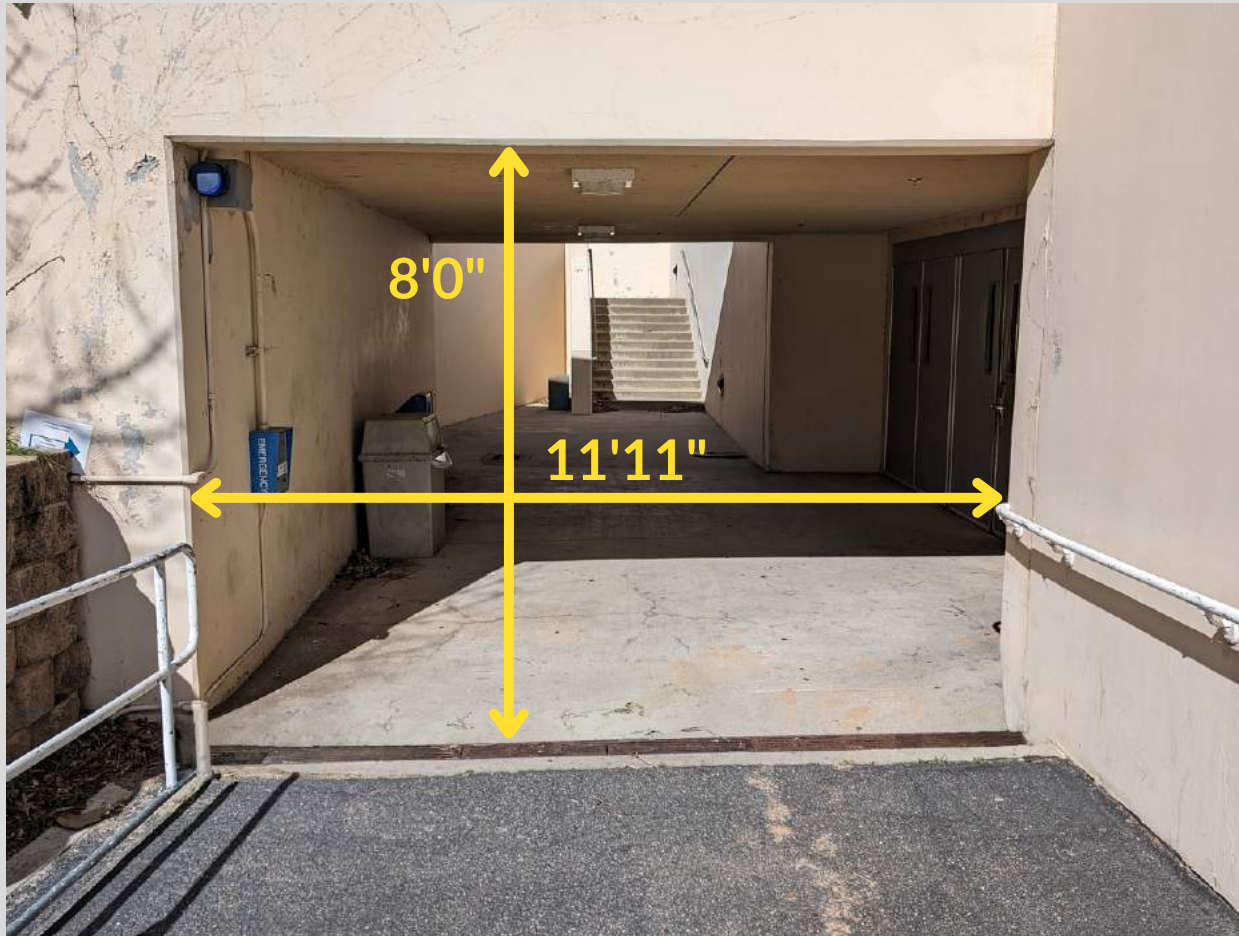
Ensemble Entry Walkway to Arena



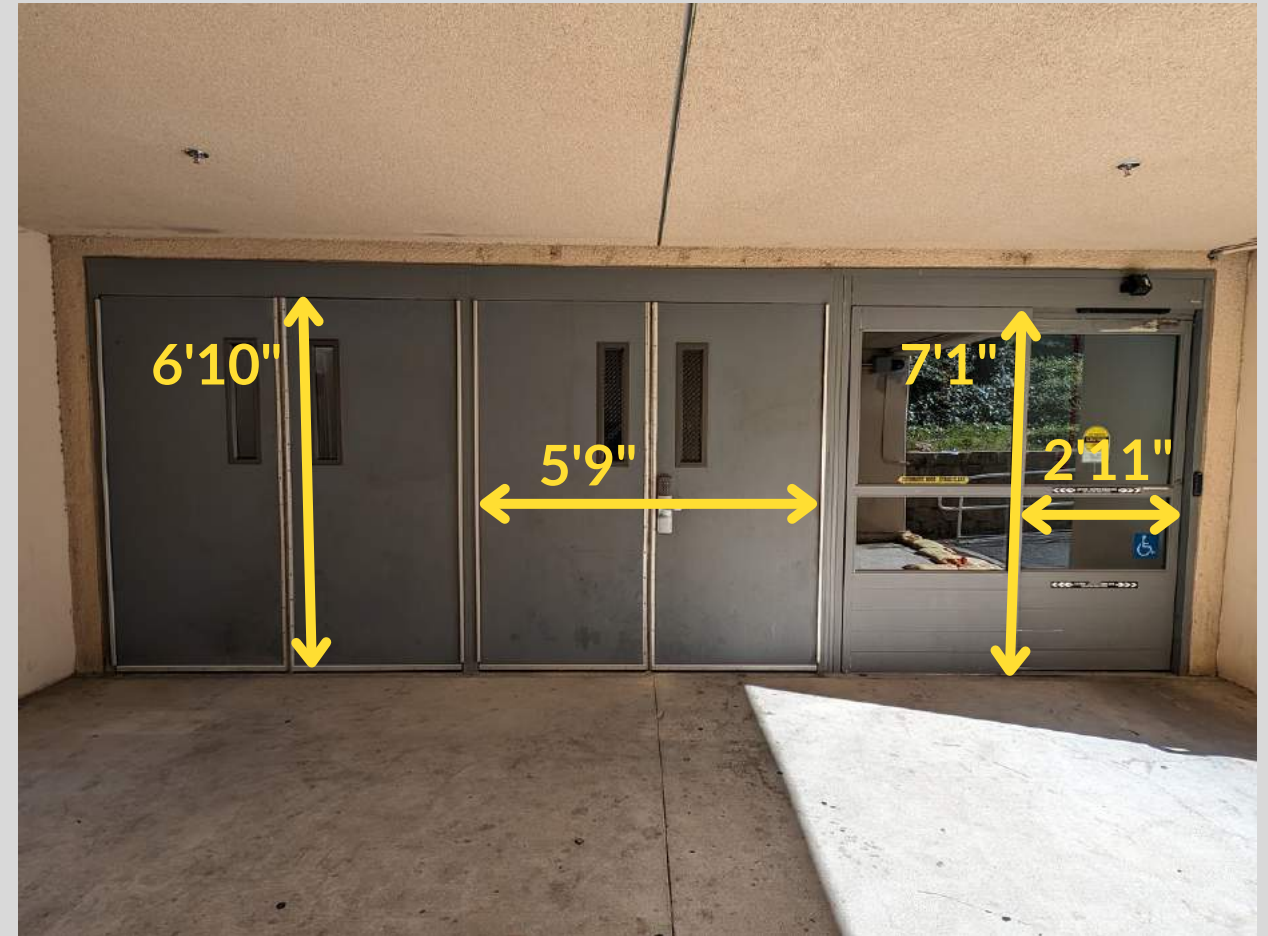
Ramp to Performance Entry



Coussoulis Arena



Ramp Overpass



Tunnel Entry Doors
(2 double doors; 1 sliding door)



Coussoulis Arena



Tunnel



Entry Doors
(1 single door; 2 double doors)



Coussoulis Arena



Exit Doors
(3 double doors)

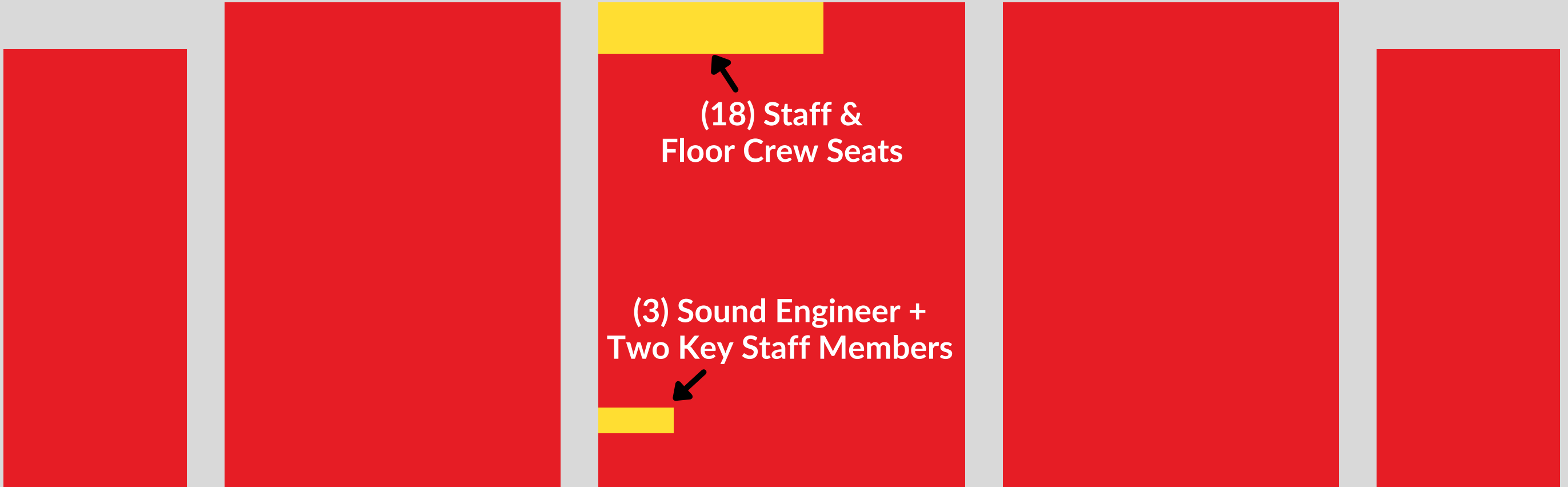


Exit Doors to Floor Folding
(3 double doors)



Coussoulis Arena

Competition Area



Coussoulis Arena

Southern California Percussion Alliance

Coussoulis Arena

